

CDM REG  
specificatio  
with the De  
Record. AI

Designed with reference to the surveys, information  
and reports listed: XXXXXXXXXXXXXXXXXXXXXXXX,  
XXXXXXXXXXXX XXXXXXXXXXXX, XXXXXXXXXXXXXXX XXXXXXXXXXXX,  
XXXXXXXXXXXX XXXXXXXXXXXX.

Rev	Date	Description
P00	15/08/23	First Issue

Dwn	Ckd	Drawn	KR
KR	CS	Checked	MH
		Date	April 2022
		Scale @ A3	1 : 1250

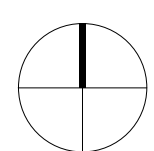
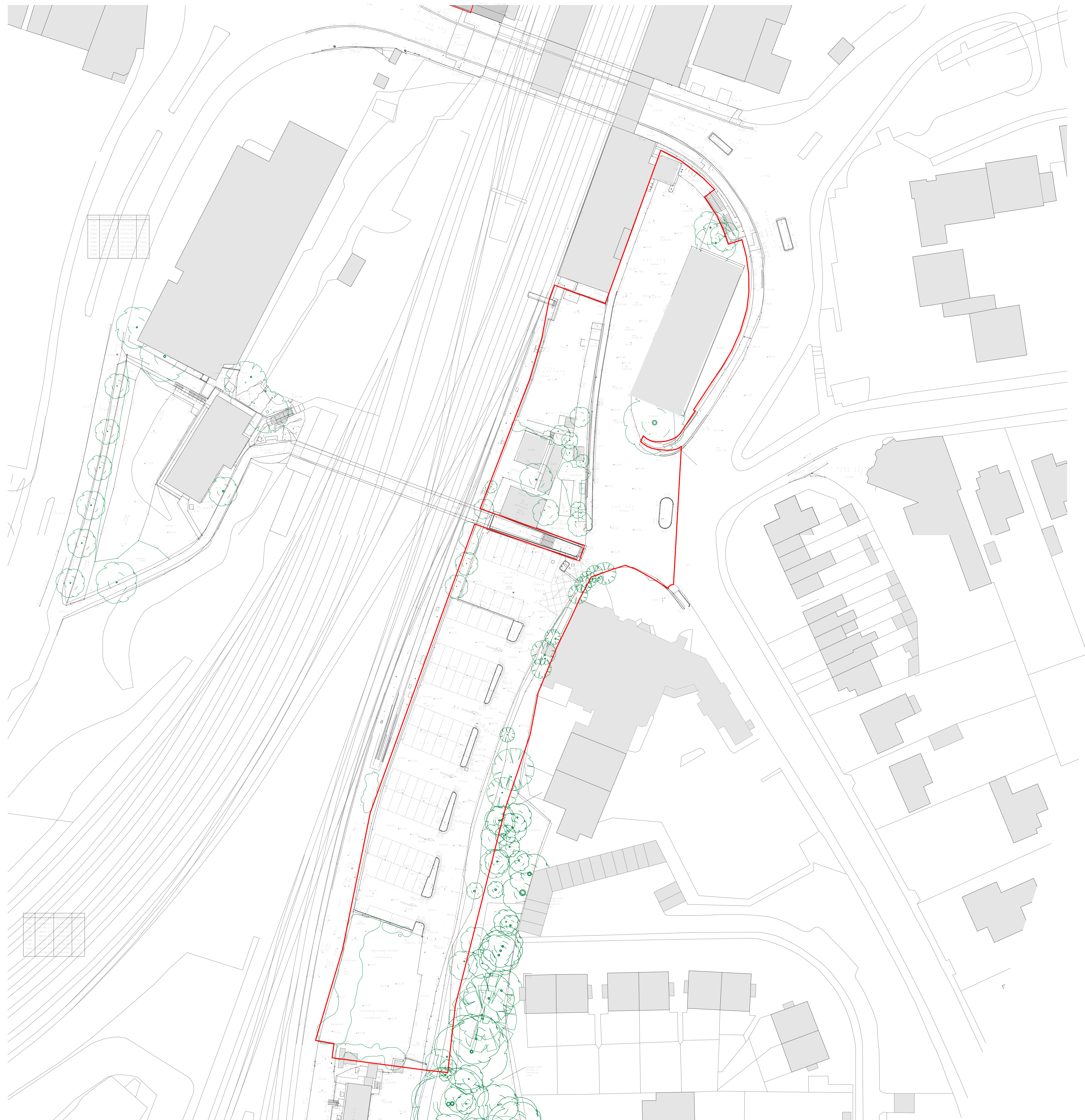
## Redhill Station

### Site Licence Condition 17

Project	Origin	Zone	Level	Type	Role	Number
RHS-	PRP - ZZ -	00 -	DR - A -	20025		
Revision			Status			
P00 - First Issue			S0 - Initial			

PRP





CDM REGULATIONS 2015. All current drawings and specifications for the project must be read in conjunction with the Designer's Hazard and Environment Assessment Record. All intellectual property rights reserved.

Designed with reference to the surveys, information and reports listed:  
XXXXXXXXXXXXX XXXXXXXXXXXXXXXX, XXXXXXXXXXXXXX XXXXXXXXXXXXX,  
XXXXXXXXXXXXX XXXXXXXXXXXXXXXX, XXXXXXXXXXXXXXXX XXXXXXXXXXXXXXXX, XXXXXXXXXXXXXXXX  
XXXXXXXXXXXXX.

Note:  
Station building information provided by Landort & Brown  
Station parking information provided by Fatkin

Rev	Date	Description
P00	28/02/23	Planning Submission

Dwn	Ck
MH	CS

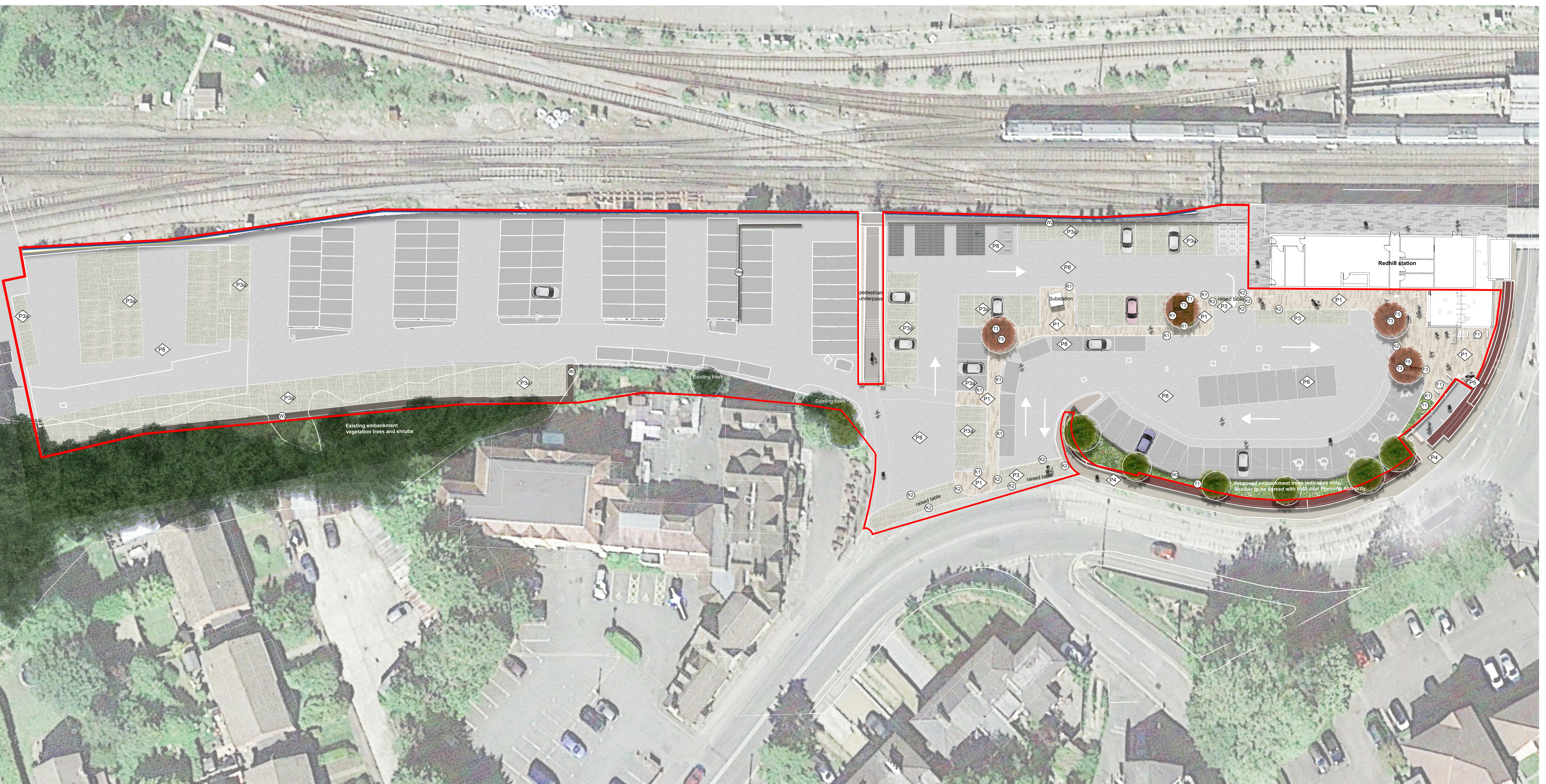
Drawn	KR
Checked	MH
Date	Feb 2023
Scale @ A1	1 : 500

**Redhill Station**  
Site B Plan Existing

Project	Origin	Volume	Level	Type	Role	Number
<b>RHS -</b>	<b>PRP -</b>	<b>ZZ -</b>	<b>00 -</b>	<b>DR -</b>	<b>A -</b>	<b>20003</b>
Revision			Status			
<b>P00 - PLANNING</b>			<b>S4 - Stage approval</b>			

PRP





**Key**

Site boundary

Hard landscape

- P1 Concrete Block Paving**  
Material: concrete  
Bond: stretcher  
Size: 100/200/300mm (l) x 100/200mm (w) x 80mm (d)  
Colour/ Finish: Natural buff
- P3 Block Paving (parking area)**  
Material: concrete  
Bond: herringbone 90°  
Size: 200mm (l) x 100mm (w) x 80mm (d)  
Colour/ Finish: buff
- P3a Permeable Block Paving (parking area)**  
Material: concrete  
Bond: herringbone 90°  
Size: 200mm (l) x 100mm (w) x 80mm (d)  
Colour/ Finish: buff
- P4 Paving**  
to Surrey County Council Highways specification

- P5 Tactile paving ( corduroy)**  
Material: concrete  
Size: 400mm (l) x 400mm (w) x 65mm (d)  
Colour/ Finish: Charcoal
- P6 Line markings (parking bays demarcation)**  
Material: waterproof polyaspartic floor coating or equal approved  
Colour/ Finish: white
- P7 Existing Tactile Paving**
- P8 Macadam paving**  
To Engineers specification
- K1 Raised concrete kerb**  
Material: concrete  
Size: 914mm (l) x 145mm (w) x 255mm (d)  
Colour/ Finish: Silver grey
- K2 Flush concrete kerb**  
Material: concrete  
Size: 914mm (l) x 145mm (w) x 145mm (d)  
Colour/ Finish: Silver grey

- Street furniture
- F1 Cycle Stand**  
Sheffield style cycle stand with base plate  
Material: stainless steel  
Size: 750mm (l) x 750mm (w) x 750mm (h)
- F3 Timber bench**  
Metal frame bench with timber slats  
Colour/Finish: natural/powder coated Anthracite Grey  
RAL 7016 frame
- F5 Recessed tree grilles (with associated aeration and irrigation system)**  
Material: steel  
Colour/ Finish: powder coated Anthracite grey RAL 7016

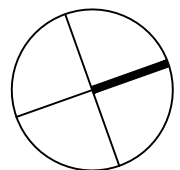
- Walls
- W2 Concrete retaining wall**  
to Structure Engineers design and specification
- W6 Existing retaining wall**  
to Structure Engineers design and specification

- Soft landscape
- T1 Ornamental planting**
- T2 Hedge planting**
- T3 Proposed trees**

Note:

- This Site Plan produced by PRP includes parking layout designed by Fatkin Architects and station building by Landolt and Brown Architects.
- For information on existing trees refer to Tree survey and Tree Protection Plan site B by Wardell Armstrong

0m 5m 10m 15m



The contractor is responsible for checking dimensions, tolerances and references. Any discrepancy to be verified with the Architect before proceeding with the works. Where an item is covered by drawings to different scales the larger scale drawing is to be worked to.

Do not scale drawing. Figured dimensions to be worked to in all cases.

Where products have been specified, PRP have reviewed applicable products available in the UK at the time of writing the specification. For the avoidance of doubt, product manufacturers and suppliers must confirm that each product is fit for its intended use and provide such evidence as may reasonably be requested to confirm performance, including, but not limited to, product test classification and interfaces with adjacent products.

Where the contractor wishes to propose alternative products, representative samples and a full technical appraisal should be submitted by the contractor to the employer demonstrating that their proposed alternative has equal or better performance. Any alternative products are subject to design team, building control, warranty provider and employer acceptance.

CDM REGULATIONS 2015. All current drawings and specifications for the project must be used in conjunction with the Designer's Hazard and Environment Assessment Record.

All intellectual property rights reserved.

Rev	Date	Description
A	08/03/2023	For Information
B	23/03/2023	For Information
C	27/03/2023	Minor layout amendment
D	02/05/2023	Minor trees layout amendment

Drawn	Chk	Drawn	LP
LP	BS	Checked	BS
LP	BS	Date	17.01.2023
LP	BS	Scale @ A0	1:200

**Redhill Station**  
Landscape GA Plan - Ground floor  
Site B

**RHS-PRP-ZZ-00-DR-L-00201**  
**REV D**  
FOR PLANNING

**PRP**

prp.co.uk  
London  
020 7653 1200