



Department
for Transport

Edward Sexton
Fares and Passenger Benefits Officer
Passenger Services
Department for Transport
Zone 4/21, Great Minster House
33 Horseferry Road
London SW1P 4DR

Direct Line:
E-mail:

Web Site: www.dft.gov.uk

By e-mail only

Dear All,

RATIFICATION REQUEST FOR CLOSURE OF NEWHAVEN MARINE STATION

Following the consultation in respect of the proposal to discontinue the use of Newhaven Marine station, Chris Heaton-Harris, Parliamentary Under Secretary of State for Transport has agreed to the publication of the summary of responses and that the Office of Rail and Road ('ORR') be requested to formally ratify the closure.

Paragraph 24 of ORR's Procedures for Reviewing Closure References suggests that the summary of responses be published for four weeks prior to reference. The summary was published on 24 June 2020

Documents making up the closure submission are:

1. Closure consultation document
2. Closure Notice (**Annex C** – of the consultation document)
3. Copy of Closure Notice published in newspapers:
 - Brighton Evening Argus 15 and 22 January 2020
 - Guardian 15 and 22 January 2020
 - The Times 15 and 22 January
4. List and photographs of closure notices at stations
5. Copy of consultation letters from the Minister to the local MP, and the Department to named stakeholders (listed in Annex B of the consultation document)
6. List and copies of statutory consultation responses received

7. Summary of consultation responses with DfT comments.

Electronic copies of these documents are attached to this e-mail.

If you require any further information, please do not hesitate to contact me.

Yours faithfully,

A handwritten signature in black ink, appearing to be 'ES', with a long horizontal flourish extending to the right.

Edward Sexton

Fares and Passenger Benefits Officer

Open consultation

Newhaven Marine station closure

Published 15 January 2020

Foreword

Network Rail, as network operator, proposes closure of Newhaven Marine station. This proposal is in accordance with the [Railways closures guidance](#) within the Railways Act 2005.

By closing the station, Network Rail would be able to focus rail industry resources on improving the passenger rail service in this area and support regeneration of the port of Newhaven and the surrounding area in partnership with East Sussex County Council. The track will remain as a siding for berthing trains, as now, but also for freight train access to Newhaven Port where a new dock and freight handling facility is due to open.

Executive summary

Introduction

Newhaven Marine, along with Newhaven Town and Newhaven Harbour, is one of 3 stations located in Newhaven, East Sussex. Newhaven Town and Newhaven Harbour are calling points on the Seaford line between Lewes and Seaford, and Newhaven Marine branches off the line just south of Newhaven Harbour. Newhaven Marine was originally built to provide rail passengers access to the Newhaven ferry terminal and was served by through trains from London Victoria.

In the 1980s the Newhaven ferry terminal was relocated north to a section of the port closer to Newhaven Town station, and passenger services into Newhaven Marine were slowly reduced until 2006, when services were suspended following safety concerns over the dangerous condition of the station canopy. Both the canopy and the station building were demolished in 2017. A single daily service in and out of the station operated as empty

stock movements until early 2019 when these were suspended owing to signalling works.

This consultation proposes to close the station to passenger rail services, thus resolving the arrangement that has applied since 2006. The track will remain as a siding for berthing trains, as now, but also for freight train access to Newhaven Port where a new dock and freight handling facility is due to open.

How to respond

The consultation period began on 15 January 2020 and will run until 19 April 2020. Please ensure that your response reaches us before the closing date. If you would like further copies of this consultation document, it can be found on [GOV.UK](https://www.gov.uk) or you can contact Andrew Johnson at the address or email below if you need alternative formats (Braille, audio CD, etc.).

Please send consultation responses to:

Newhaven Marine Station consultation

Department for Transport

Great Minster House

33 Horseferry Road

London SW1 4DR

Or by email to: newhavenmarine.consultation@dft.gov.uk

When responding, please state whether you are responding as an individual or representing the views of an organisation. If responding on behalf of a larger organisation, please make it clear who the organisation represents and, where applicable, how the views of members were assembled.

A list of those consulted is attached at [Annex B](#). If you have any suggestions of others who may wish to be involved in this process please contact us.

Freedom of Information

Information provided in response to this consultation, including personal information, may be subject to publication or disclosure in accordance with

the Freedom of Information Act 2000 (FOIA) or the Environmental Information Regulations 2004.

If you want information that you provide to be treated as confidential, please be aware that, under the FOIA, there is a statutory code of practice with which public authorities must comply and which deals, amongst other things, with obligations of confidence.

In view of this it would be helpful if you could explain to us why you regard the information you have provided as confidential. If we receive a request for disclosure of the information, we will take full account of your explanation, but we cannot give an assurance that confidentiality can be maintained in all circumstances. An automatic confidentiality disclaimer generated by your IT system will not, of itself, be regarded as binding on the department.

The department will process your personal data in accordance with the Data Protection Act (DPA) and in the majority of circumstances this will mean that your personal data will not be disclosed to third parties.

Confidentiality and data protection

The Department for Transport (DfT) is carrying out this consultation to gather evidence on the Network Rail proposal to close Newhaven Marine station. The consultation is being carried out in the public interest to inform the Secretary of State for Transport's opinion that the closure should be allowed. DfT is the data controller for your personal information.

When responding to this consultation you may share personal data with us such as postal, email or IP addresses. Any such data will only be stored for the duration of the consultation exercise and deleted following the publication of the DfT's response to the consultation. Until that point, your information will be stored securely.

Sharing personal data

DfT may also share your consultation response with Network Rail, to inform discussion which will feed into our consideration and decision-making. However, no personal data (such as names and contact details) will be shared with these third parties.

Further information

[DfT's privacy policy](#) has more information about your rights in relation to your personal data, how to complain and how to contact the Data Protection Officer.

To receive this information by telephone or post, contact us on 0300 330 3000 or write to

Data Protection Officer
Department for Transport
Ashdown House
Sedlescombe Road North
St Leonards-on-Sea
TN37 7GA

Closure of Newhaven Marine station

Purpose of the consultation

Network Rail, as network operator, have carried out an assessment in accordance with the Department for Transport's (DfT) 'Railways closures guidance' of whether maintaining Newhaven Marine station as part of the national rail network represents value for money. It concluded that, given the lack of direct access to any other sites, such as the Port of Newhaven, proximity to the operational Newhaven Harbour station, and the demolition of the station building, canopy and subsequent loss of platform lighting, the station should be officially closed with immediate effect.

Under section 29(7)(a) of the Railways Act 2005 the Secretary of State for Transport, as the relevant national authority, is required to carry out a consultation concerning a rail operator's proposal to discontinue use of a particular station if, having received the operator's assessment, the Secretary of State has formed an opinion that the closure should be allowed.

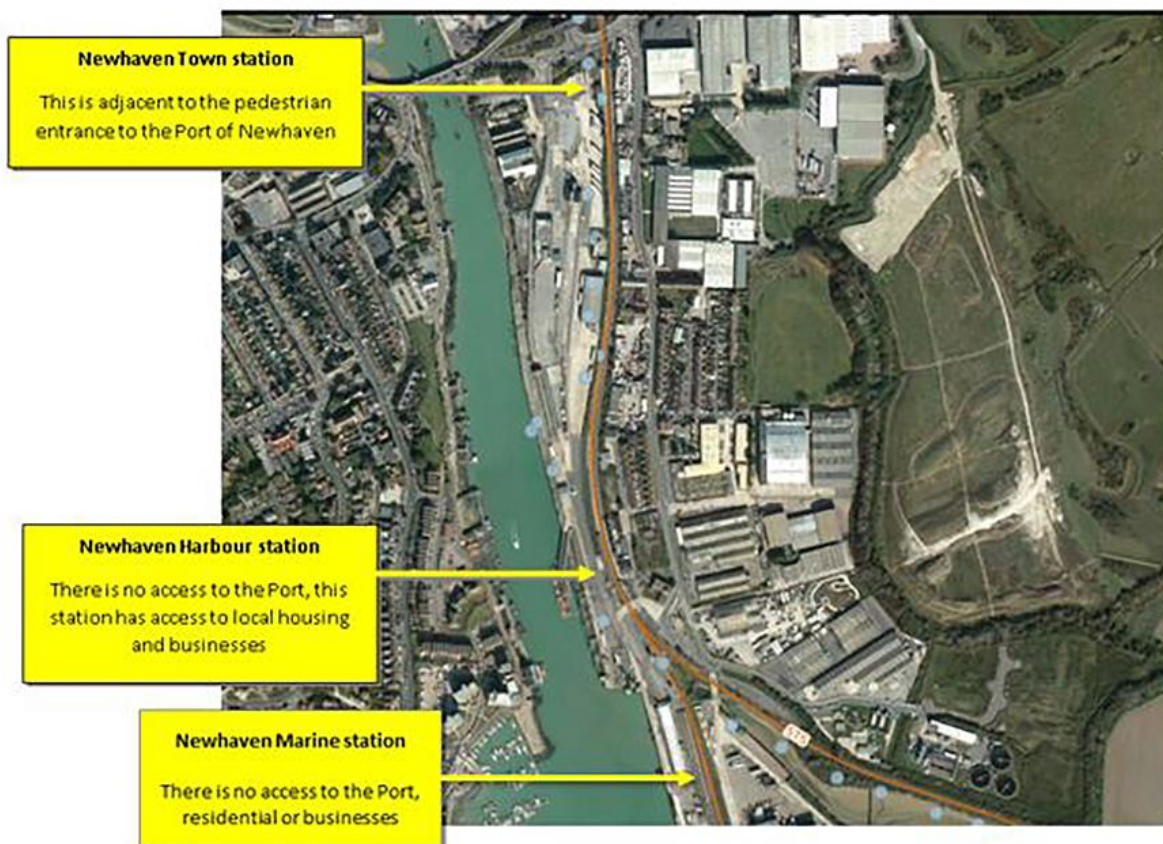
A copy of the [Railways closures guidance](#) has been published on GOV.UK.

Interested parties are therefore invited to comment on Network Rail's proposal.

Background

Newhaven Marine, along with Newhaven Town and Newhaven Harbour, is 1 of 3 stations located in Newhaven, East Sussex (see figure 1). Newhaven Town and Newhaven Harbour are calling points on the Seaford line between Lewes and Seaford (see figure 2), and Newhaven Marine branches off the line just south of Newhaven Harbour (see figure 3). Newhaven Marine, known as Platform 3 of Newhaven Harbour until 1984, was originally built to provide rail passengers access to the Newhaven ferry terminal, and was served by through trains from London Victoria. The structure of the English Channel travel market for rail passengers has changed considerably since, with the introduction of the Eurotunnel Le Shuttle and Eurostar services direct to Paris and Brussels contributing to the decline in passenger use of ferry services (see figure 4). While cross-channel ferry services continue from Newhaven, carrying a mixture of passengers and freight, the passenger ferry terminal building has since moved to a new location adjacent to Newhaven Town station.

Figure 1: aerial view Newhaven Marine



Aerial view of Newhaven with the locations of Newhaven Town, Newhaven Harbour and Newhaven Marine stations marked.

Figure 2: Newhaven track plan

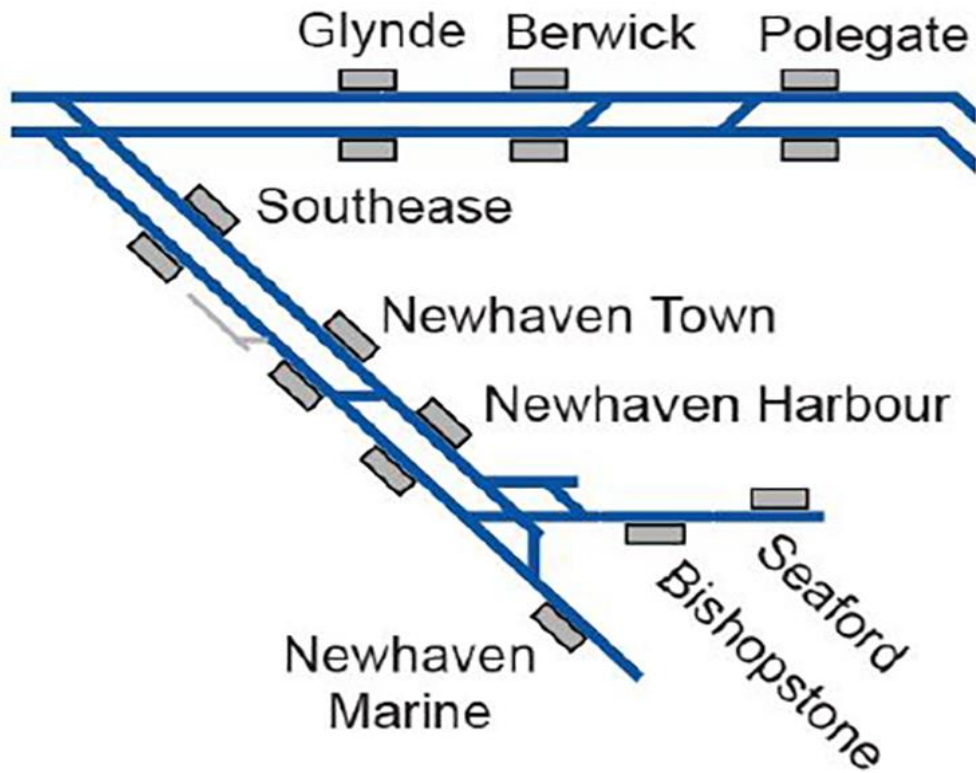
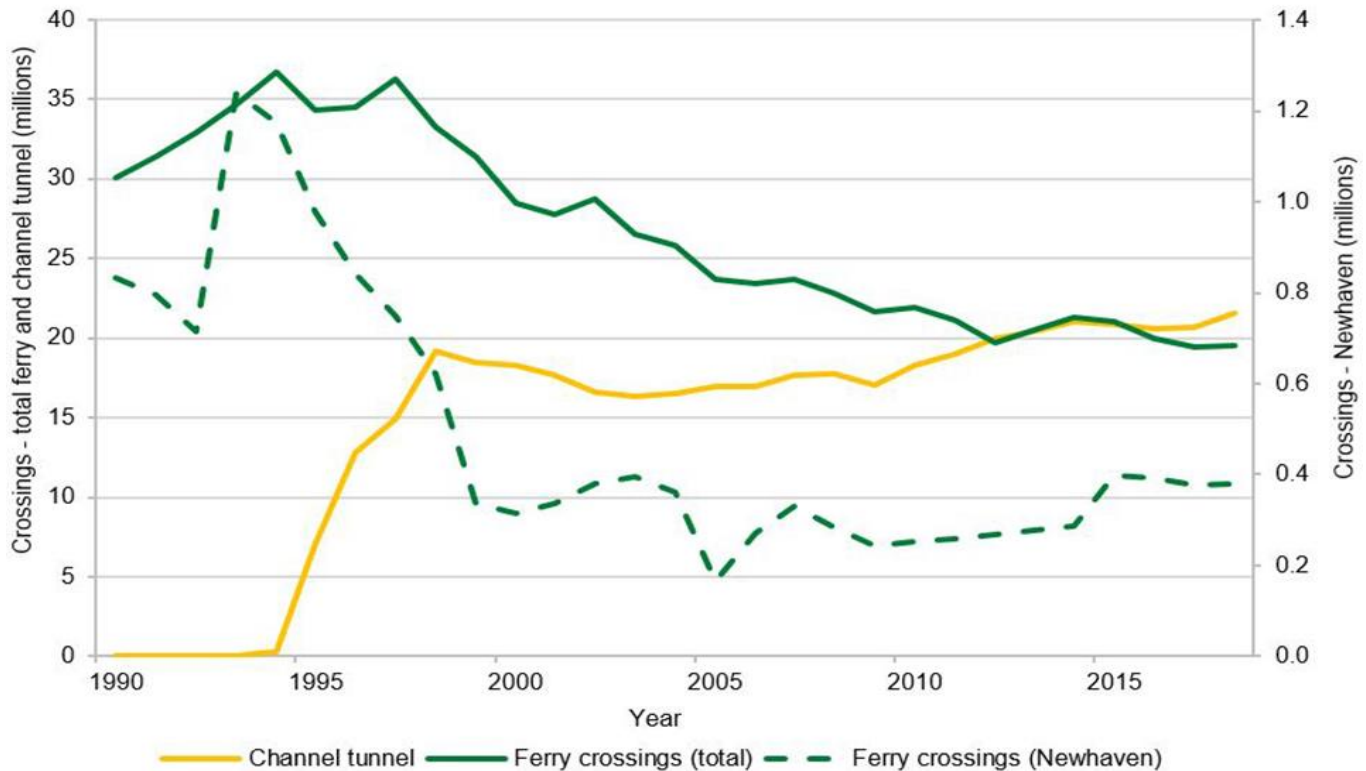


Figure 3: view of branch line to Newhaven Marine station



The branch line to Newhaven Marine station in October 2019 from the footbridge at Newhaven Harbour station.

Figure 4: English Channel passenger crossings by mode: Total Ferry, Channel Tunnel & Newhaven (millions) 1990 to 2019



Line graph adapted from Sea Passenger Statistics 2018: Table SPAS0101. (Source: <https://www.gov.uk/government/statistics/sea-passenger-statistics-2018-short-sea-routes-provisional>)

In 2006 passenger rail services were suspended because of the dangerous condition of the station canopy. Both the canopy and the station building were demolished in 2017 (see figure 5). A single daily service in and out of the station operated as empty stock movements until early 2019 when these were suspended owing to signalling works. The proposed closure would see the platform demolished and the track remain as a siding for berthing trains, as now, but also for freight train access to Newhaven Port where a new dock and freight handling facility is due to open.

Figure 5: Platform at Newhaven Marine station



The platform at Newhaven Marine station, August 2018.

Summary of appraisal

The Port of Newhaven has confirmed that it has no plans to move the ferry passenger terminal back to the Newhaven Marine station site. In addition, the port plans to improve the facilities for passengers at the current ferry terminal (adjacent to Newhaven Town station) and for freight at a site beyond the existing Newhaven Marine platform. The track would remain electrified and available for use as a berthing siding/turnback for 8-car passenger trains, as now, as well as being the reception siding for a new freight facility beyond the 8-car mark. A 'STOP – do not proceed without permission' board would be erected at the end of Network Rail infrastructure.

As part of a wider scheme to support economic development of the port of Newhaven and its enterprise zone, East Sussex County Council and the Department for Transport have given approval to proceed with the construction of the Newhaven Port Access Road (NPAR) as part of wider objectives to regenerate the Port of Newhaven and the surrounding area.

The NPAR is a new road and flyover providing access to the East Quay, the southernmost and largest section of the port of Newhaven, from the A259 road that connects Newhaven to Seaford and further east towards Kent. A copy of the NPAR Business Case may be found on the [East Sussex County Council website \(PDF, 4MB\)](#).

With the regeneration of the Port of Newhaven, and in particular the East Quay, as a strategic hub for industry and freight in East Sussex, the Newhaven Marine station site would change to a rail freight facility. Rail could compete with road freight for the inland distribution of goods and bring potential environmental and decongestion benefits. Alternatively, restoring frequent passenger services to Newhaven Marine may generate passenger traffic from those working at the East Quay.

The appraisal considers the case for infrastructure works necessary to restore passenger rail services at Newhaven Marine station against the baseline do-minimum of retaining the status quo of suspended passenger rail services to the station. The appraisal finds that there would be insignificant passenger demand and benefits from restoring passenger rail services to the station as it does not serve the passenger ferry terminal or any other potential trip origins or destinations, nor does using Newhaven Marine station offer any journey time savings as it would only be accessible via the southbound Newhaven Harbour station platform, crossing the footbridge and exiting from the northbound platform. Currently the Port of Newhaven does not allow any access to the station. Additionally, reconstruction of the station would be expected to incur minor disbenefits on existing users and non-users of the network.

An estimate of capital costs suggests that an initial outlay of £607,400 is required to reconstruct the station and bring the station up to minimum safety standards, including installing lighting columns, a customer information system, CCTV surveillance etc. It is also assumed that renewals costs of £60,740 would be incurred 30 years after construction. The inclusion of operating costs of £50,000 per annum brings the Net Present Value (NPV) of the scheme to -£1.94 million in 2010 prices, with a benefit-cost ratio (BCR) of -0.03, implying the scheme to restore passenger services represents very poor value for money. As seen in Appendix A, sensitivity tests around the level of optimism bias and potential use by commuting passengers from the East Quay fail to improve the BCR above poor value for money.

Table 1. NPV and BCR summary – central case

Monetised costs and benefits	£m PV
Capital and renewals costs	0.78
Operational costs	1.10
Generated revenue	0.00
Present value of costs (PVC)	1.88
User benefits	-0.05
Non-user benefits	-0.01
Present value of benefits (PVB)	-0.06
Net present value (NPV = PVB – PVC)	-1.94
Benefit-cost ratio (BCR = PVB/PVC)	-0.03

The 'Railways closures guidance' sets out 5 key criteria which need to be addressed by the value for money appraisal to take full account of any non-monetised impacts when the BCR is lower than 1.5. The conclusions are summarised below.

Environmental

Environmental impacts are negligible, or slightly negative. New services are unlikely to have a substantial impact on biodiversity, water, landscape, townscape or noise. As the line is electrified and new services would not add significant train mileage, the air quality impact in Newhaven is zero and greenhouse gas impact minimal.

Safety

There is a minor safety risk were passenger services to Newhaven Marine to be reinstated as there is no easy access. Passengers would walk to the southbound platform of Newhaven Harbour station, cross the footbridge to access the northbound platform, and re-join the road down to Newhaven Marine.

Economy

Most potential economic impacts are incorporated into the NPV and BCR calculations, however there could be a few second-order impacts not quantified in these metrics. Restoring passenger services may lead to worsening journey times or reliability for passengers using the line to reach other stations, as constraints in the track layout could render the current twice hourly timetable to Seaford unfeasible (the line is single track from Newhaven Harbour to Seaford). This would be hard to quantify without extensive timetable modelling but it is likely that if a daily passenger service was operated to/from Newhaven Marine, when that service was operated that would be instead of a service to/from Seaford. Restoring passenger services to and from the station may also hinder the development of the rail freight facility, which could stunt the regeneration of Newhaven Port and the East Quay.

Accessibility

Due to the proximity of Newhaven Harbour station, and fact that the East Quay (the only area for which Newhaven Marine could offer any access advantage) is entirely made up of commercial and not residential property, it is unlikely that restoring passenger services would return access to the network to any non-car owning households.

Integration

Restoring passenger services from Newhaven Marine would likely restrict the volume of freight services that would be able to use the branch line, impacting the decision to reopen the line as a freight facility. This could potentially hinder the redevelopment of both the East Quay and the port of Newhaven as a whole, and prevent the Department and East Sussex County Council from achieving their strategic objectives and delivering the benefits of the NPAR scheme.

We conclude that the net beneficial impacts of restoring passenger services under these 5 criteria are insignificant, if not slightly negative. Closure of the station has been assessed as the option which offers best value for money. Given this value for money assessment, and the very low impact on users, the department has concluded that it should proceed with the closure of Newhaven Marine station.

What will happen next?

Following the consultation period, we will review the responses to the closure proposal and undertake such further analysis as might be necessary. We will produce a summary of the outcome of the consultation and publish this on the DfT website.

The outcome of the closure consultation will be shared with Network Rail. Should the outcome of the consultation process agree with Network Rail's assessment, the Office of Rail and Road will then be required to ratify the proposal to ensure it satisfies the 'Railways closures guidance' before the closure can go ahead.

If you have questions about this consultation please contact:

Andrew Johnson
Department for Transport
Great Minster House
33 Horseferry Road
London SW1P 4DR

Telephone 0300 330 3000

Annex A: summary of formal appraisal

Introduction and context

The appraisal describes the benefits and costs of 2 options:

- the 'do-minimum' case – maintaining the status quo of a daily service carrying no passengers into Newhaven Marine
- the 'do-something' case - conducting capital works necessary to restore the station to working order, and reinstating passenger rail services into the station. These capital works would include platform repair, restoring the canopy and installing CCTV, seating and toilets

A comparison of the costs and benefits of restoring the Newhaven Marine station, judged against the baseline of retaining the status quo, suggests the scheme offers very low value for money.

Formal appraisal

Scheme objectives

The principle objective of the closure of Newhaven Marine station is to enable and encourage the regeneration of the port of Newhaven, and in particular the East Quay area. Restoring passenger services would offer no journey time advantages nor would it offer access to any locations not already served by Newhaven Harbour. Restoring services could also prevent the use of the branch line as an electrified turnback siding, as now, and for freight train access to Newhaven Port where a new dock and freight handling facility is due to open. Closure of Newhaven Marine would resolve the arrangement that has applied since 2006.

Station options

Retaining the status quo of a daily service carrying no passengers was considered as the 'do minimum' option, suggesting that if no intervention was made the station would remain open, but closed to passenger services. This was compared to the 'do something' which would mean restoring the station to working order and running a daily return passenger working from Brighton to Newhaven Marine.

Costs and benefits

This section uses the Department for Transport's (DfT) transport analysis guidance, WebTAG to conduct an economic appraisal of the costs and benefits of restoring passenger services to Newhaven Marine station. [WebTAG guidance](#) is available on GOV.UK.

Outputs from the appraisal for Newhaven Marine, namely an assessment of the net present value (NPV) and benefit-cost ratio (BCR) of the scheme, will inform a conclusion based on the department's value for money categories (see table 2). The scheme was appraised over a 60-year period, with the opening year assumed to be 2019. The initial capital cost of rebuilding the station is estimated to be £607,400, a breakdown of which is available in table 3. Renewals costs of £60,740 are assumed to incur 30 years after the station is constructed, and estimated operational costs are £50,000 per annum.

Both the initial capital cost and recurring operating costs are rebased to 2010 prices, discounted and adjusted to market prices. The scheme is appraised using standard appraisal assumptions: Benefits and costs are indexed to 2010 prices using the GDP deflator, discounted at 3.5% for the

first 30 years after the year of appraisal and 3% thereafter, Optimism bias uplift is 64% of the NPV of capital costs and the market price adjustment is 19%. Optimism bias is applied to capital expenditure as per WebTAG best practise. DfT estimates of operating and capital expenditure gives a total present value of costs of £1.88 million, representing the discounted cost to the department over the life of the asset.

Table 2. Value for money categories (before inclusion of non-monetised impacts)

VfM Category	Implied by
Very High	BCR greater than or equal to 4
High	BCR between 2 and 4
Medium	BCR between 1.5 and 2
Low	BCR between 1 and 1.5
Poor	BCR between 0 and 1
Very Poor	BCR less than or equal to 0

Newhaven Marine station does not serve any potential trip origins or destinations that would not otherwise be better served by Newhaven Harbour station, and the assumption has been made that Newhaven Marine would have the same fares structure as Newhaven Town and Newhaven Harbour. Hence there would be no additional passenger journeys generated, and no increased revenue returned to the government as a result of reopening. It is possible that some additional passengers would travel to Newhaven Marine following reopening just for the novelty, but those journeys would be marginal, and all other journeys would likely be abstracted from journeys that would otherwise have gone to/from Newhaven Town or Harbour.

Appraised benefits are typically separated into user benefits (monetised journey time savings, monetised performance or reliability benefits) and non-user benefits (monetised journey time savings for road users and reductions in emissions and noise as road users switch to rail meaning roads becomes less congested).

Increased revenue generated by additional journeys is netted off the cost to government, so does not show up in the present value of benefits.

Because Newhaven Marine station is only accessible via the footbridge at Newhaven Harbour station and we assume no passenger rail services would call at Newhaven Marine station that would not call at Newhaven Harbour station, it is expected that there will be no journey time benefits, and no resulting modal shift from road users.

Additionally, it is assumed that there are disbenefits to users and to non-users of the existing rail network, worth £60,740 and £15,185 respectively, which are incurred as a result of reconstruction of the new station.

Table 3. Breakdown of capital costs for restoring passenger rail services at Newhaven Marine station

Task	Cost
Platform repair/reconstruction	£200,000
Toilets	£50,000
Platform canopy	£40,000
Lighting	£50,000
Ticket vending machine	£6,000
Closed-circuit TV	£40,000
Customer information system	£50,000
Waiting shelter	£10,000
Seating	£1,400
Fencing	£50,000
Project management etc	£60,000
Contingency	£50,000
Total	£607,400

For clarity, it is possible that some passengers do use the Newhaven Marine station to board services, but as the station offers no access advantage or journey time savings these journeys would primarily be journeys otherwise taken from Newhaven Harbour station, thus offering no additional benefit to passengers over the do-minimum.

The summary in table 4 suggests that there are no monetised benefits from restoring passenger rail services to Newhaven Marine, leading to a

net present value of -£1.88 million and a benefit-cost ratio of -0.03. These metrics imply that the proposal would deliver very poor value for money.

Table 4. Appraisal summary – central case

Monetised costs and benefits	£m PV
Initial capital costs	0.78
Operational costs	1.10
Generated revenue	0.00
Present value of costs (PVC)	1.88
User benefits	-0.05
Non-user benefits	-0.01
Present value of benefits (PVB)	-0.06
Net present value (NPV = PVB – PVC)	-1.94
Benefit-cost ratio (BCR = PVB/PVC)	-0.03

Sensitivity tests

Optimism bias is the systematic tendency for scheme developers and appraisers to under-estimate the true costs of a given infrastructure project. Typically, optimism bias is reflected in appraisals using a standard percentage uplift depending on how far progressed the project is, as specified in WebTAG. The central case appraisal uses a typical early stage uplift of 64% of capital cost NPV. However, given the relatively small scale of such a project and the lack of any bespoke construction, this may not be appropriate. As such, a sensitivity test is included with no optimism bias uplift. This sensitivity test leads to a fall in the NPV of the scheme but, since the scheme does not deliver any substantial benefits, the BCR still demonstrates very poor value for money.

Table 5. NPV and BCR summary – no optimism bias sensitivity

Monetised costs and benefits	£m PV
Initial capital costs	0.48
Operational costs	1.10
Generated revenue	0.00
Present value of costs (PVC)	1.58
User benefits	-0.05
Non-user benefits	-0.01
Present value of benefits (PVB)	-0.06
Net present value (NPV = PVB – PVC)	-1.64
Benefit-cost ratio (BCR = PVB/PVC)	-0.04

Estimates of wider economic impacts in the Newhaven Port Access Road (NPAR) business case suggest that the scheme could create 456 new jobs across the port of Newhaven, with 216 of these in the East Quay, for which Newhaven Marine may offer slightly closer access to the rail network. Due to uncertainty around the robustness of this estimate, a sensitivity test has been performed which represents a best-case scenario.

The do-minimum in this sensitivity assumes that no passenger services run from Newhaven Marine, the wider economic benefits identified in the NPAR appraisal are realised and all 216 new employees commute to the East Quay via Newhaven Harbour station. In the do-something case all these new employees make use of the reopened Newhaven Marine station, and it is assumed that access to the East Quay is opened south of Newhaven Marine, yielding a generalised journey time saving of 3 minutes per journey from using Newhaven Marine instead of Newhaven Harbour: It is assumed that total walking time from Newhaven Harbour to the centre of the East Quay is 5 and a half minutes, while the equivalent journey from Newhaven Marine is 3 minutes. Applying the WebTAG 2 times weighting for walking time and adding 2 minutes of in-train time to the Newhaven Marine journey time yields a generalised journey time saving of 3 minutes. There are no additional non-user benefits or revenue transfer, as the net number of passengers is the same in the do-something as the do-minimum, and Newhaven Marine is assumed to have the same fares structure as Newhaven Harbour.

The results of this sensitivity are presented in table 6, generating an NPV of -£0.30 million and a BCR of 0.84, which implies poor value for money. It is worth noting that while the sensitivity assumes that 100% of generated jobs in the East Quay make use of Newhaven Marine station to travel to work, on average, as set out in Table TSGB0109, [Transport Statistics Great Britain 2017](#), only 4% of jobs in the South East outside of London are commuted to via rail, so this sensitivity test represents a very optimistic scenario.

Table 6. NPV and BCR summary – East Quay sensitivity

Monetised costs and benefits	£m PV
Initial capital costs	0.78
Operational costs	1.10
Generated revenue	0.00
Present value of costs (PVC)	1.88
User benefits	1.60
Non-user benefits	-0.01
Present value of benefits (PVB)	1.59
Net present value (NPV = PVB – PVC)	-0.30
Benefit-cost ratio (BCR = PVB/PVC)	0.84

Appraisal results

The ‘Railways closures guidance’ sets out 5 key criteria which need to be addressed by the value for money appraisal to take full account of any non-monetised impacts when the BCR is lower than 1.5. We conclude that the net beneficial impacts of restoring passenger services under these 5 criteria are insignificant, if not slightly negative. Closure of the station has been assessed as the option which offers best value for money. Given this value for money assessment, and the very low impact on users, the department has concluded that it should proceed with the closure of Newhaven Marine station. This conclusion is based on the assessment summarised below.

Environmental

Based on the following assessment, environmental impacts are negligible:

- noise – services would operate at low speed approximately 180 metres from the closest local housing so changes in traction noise would be negligible
- air quality – the line is electrified so there would be no air quality impacts in Newhaven
- greenhouse gases – the line is electrified so a very slight adverse impact is possible depending on the generating mix of fuels and the change in train vehicle use
- landscape – no impact
- townscape – no impact
- historic environment – no impact
- biodiversity – the new station building would be built on an existing brownfield site, and services run on existing infrastructure so it is unlikely that there will be any negative impact on biodiversity
- water environment – restoring passenger services is unlikely to have any additional impact on top of the pre-existing services between Newhaven Harbour and Seaford, which run very close to Mill Creek

Safety

There is a minor safety risk were passenger services to Newhaven Marine to be reinstated as there is no easy access. Passengers would walk to the southbound platform of Newhaven Harbour station, cross the footbridge to access the northbound platform, and re-join the road down to Newhaven Marine.

Economy

The majority of the economic impacts of reinstating passenger services from Newhaven Marine are incorporated into the economic appraisal and resulting metrics; the BCR of -0.03 and NPV of -£1.94. There may however be a few second order impacts not quantified in these metrics:

- restoring passenger services may lead to worsening journey times or reliability for passengers using the line to reach other stations, as constraints in the track layout may render the current timetable unfeasible. This would be hard to quantify without extensive timetable modelling

- restoring passenger services could hinder the development of a rail freight facility using the branch line, which could stunt the regeneration of Newhaven Port and the East Quay

Accessibility

The station closures guidance suggests that accessibility should be judged on the number of non-car owning households within 800 metres of the station who would likely see a reduction in public transport access following closure of the station. Newhaven Harbour lies just 180 metres to the north of Newhaven Marine, meaning the only likely affected area would be the East Quay site, which is made up of entirely commercial and not residential property, and not currently accessible from Newhaven Marine. As such it is very unlikely that any households would see improved access to the network following restoration of passenger services from Newhaven Marine.

Integration

As mentioned in the accessibility section, the regeneration of Newhaven is a priority both for the department and for East Sussex County Council. Redevelopment of the port of Newhaven, and in particular the East Quay, would, as set out in the NPAR, facilitate the expansion of environmental technology and advanced engineering in the medium term, and manufacturing in the short term.

East Sussex County Council have identified potential to move to higher value and higher density employment opportunities in Newhaven, making use of large brownfield sites in and around the port.

Newhaven also hosts the ferry service to Dieppe which, following the decline in passenger traffic, is primarily used by freight traffic at present. Expansion and regeneration of the Newhaven enterprise zone could be accompanied by an increase in freight traffic to and from the port. Were Newhaven Marine station to be closed, the line would remain as an electrified turnback siding and provide access to a new freight facility within the port. Restoring passenger services into the station could hinder development of the port, restrict the use of a low-carbon alternative to road freight in and out of the East Quay, and prevent the department and East Sussex County Council from achieving their strategic objectives and delivering the benefits of the NPARscheme.

Annex B: list of those consulted

The following stakeholders have been sent a copy of this consultation document and invited to respond:

British Transport Police
Coast to Capital Local Enterprise Partnership
DB Cargo Ltd
DFDS
Direct Rail Services Limited
Disabled Persons Transport Advisory Committee
East Sussex County Council
Freightliner Ltd
GB Railfreight Ltd
Govia Thameslink Railway
Lewes District Council
Maria Caulfield MP (Lewes)
Network Rail
Newhaven, Lewes & District Mencap
Newhaven Port Authority
Newhaven Town Council
Office of Rail & Road
Possability People
Rail Delivery Group
Rail Freight Group
Railfuture
Transport Focus

Annex C: Proposal by operator to close Newhaven Marine station

Network Rail has notified the Department for Transport that it proposes to close Newhaven Marine station.

Under section 29(7)(a) of the Railways Act 2005, the Secretary of State, as the relevant railway funding authority, is required to carry out a consultation concerning any proposal to discontinue the use of a station.

This notice is made in compliance with the statutory requirements in Schedule 7 to the Railways Act 2005 and relates to the closure of the following station:

- Newhaven Marine station, which is located on a short branch immediately south of Newhaven Harbour station

Following the [Railways closures guidance 2006](#), Network Rail, as network operator, has carried out an initial assessment of whether retaining the existing station as part of the national rail network represents value for money. Network Rail concluded that closing Newhaven Marine station and keeping the track as a siding for berthing trains, as now, but also for freight train access to Newhaven Port where a new dock and freight handling facility is due to open, offered better value for money. It is proposed that, subject to successful completion of the closure process, the station will be closed, on or after 26 September 2020.

Anyone wishing to see Network Rail's initial assessment, and a summary of it, may [view the consultation document on GOV.UK](#).

The consultation document may also be inspected at the Department for Transport's offices at Great Minster House, 33 Horseferry Road, London, SW1P 4DR. Alternatively, copies can be obtained from Andrew Johnson at the same address or by email

from newhavenmarine.consultation@dft.gov.uk. Copies will be provided free of charge.

Representations about the proposal should be sent to: newhavenmarine.consultation@dft.gov.uk or

Newhaven Marine Station Consultation

Department for Transport

Great Minster House

33 Horseferry Road

London, SW1P 4DR

no later than 19 April 2020.

Consultation principles

The consultation is being conducted in line with the government's key consultation principles which are listed below. [Further information is available on GOV.UK](#).

If you have any comments about the consultation process please contact:

Consultation Co-ordinator

Department for Transport

Great Minster House

London SW1P 4DR

Email consultation@dft.gov.uk



Classified

To advertise call **01273 021400** Or email : adverts@theargus.co.uk

To place your advertisements online: theargus.co.uk/classifieds

Property Wanted

I BUY HOUSES

ANYTHING CONSIDERED
NO OBLIGATION & NO FEES
WORK TO YOUR TIMESCALE
ADVANCE CASH AVAILABLE
I BUY PERSONALLY & HAVE BEEN
HELPING PEOPLE MOVE ON SINCE 2005.
CALL ROBERT NOW **07967 460001**

Public Notices



Department for Transport

RAILWAYS ACT 2005

PROPOSAL BY OPERATOR TO CLOSE NEWHAVEN MARINE STATION

Network Rail has notified the Department for Transport that it proposes to close Newhaven Marine station.

Under section 29(7)(a) of the Railways Act 2005, the Secretary of State, as the relevant railway funding authority, is required to carry out a consultation concerning any proposal to discontinue the use of a station.

This notice is made in compliance with the statutory requirements in Schedule 7 to the Railways Act 2005 and relates to the closure of the following station:

- Newhaven Marine station, which is located on a short branch immediately south of Newhaven Harbour station.

Following the Railways Closures Guidance 2006, Network Rail, as network operator, has carried out an initial assessment of whether retaining the existing station as part of the national rail network represents value for money. Network Rail concluded that closing Newhaven Marine station and keeping the track as a siding for berthing trains, as now, but also for freight train access to Newhaven Port where a new dock and freight handling facility is due to open, offered better value for money. It is proposed that, subject to successful completion of the closure process, the station will be closed, on or after 26 September 2020.

Anyone wishing to see Network Rail's initial assessment, and a summary of it, may view the consultation document on the Department for Transport's website at dft.gov.uk/consultations/open. The consultation document may also be inspected at the Department for Transport's offices at Great Minster House, 33 Horseferry Road, London, SW1P 4DR. Alternatively, copies can be obtained from Andrew Johnson at the same address or by email from NewhavenMarine.Consultation@dft.gov.uk. Copies will be provided free of charge.

Representations about the proposal should be sent to: NewhavenMarine.Consultation@dft.gov.uk or Newhaven Marine Station Consultation, Department for Transport, Great Minster House, 33 Horseferry Road, London, SW1P 4DR no later than 19 April 2020.

DAVID HENRY TYLER (Deceased)

Pursuant to the Trustee Act 1925 any persons having a claim against or an interest in the Estate of the aforementioned deceased, late of 15 Eaton Gate 2 Eaton Gardens Hove East Sussex BN3 3UL, who died on 21/11/2019, are required to send particulars thereof in writing to the undermentioned Solicitors on or before 27/03/2020, after which date the Estate will be distributed having regard only to claims and interests of which they have had notice.

Jessica Partridge
MAYO WYNNE BAXTER LLP
3 Bell Lane Lewes
East Sussex BN7 1JU T875000


the guide

Every Friday in The Argus

Your comprehensive guide to leisure activities in Sussex

To advertise call **01273 021407**

theargus.co.uk/classifieds



Place your advertisements online - visit theargus.co.uk/classifieds

Place your advertisements online - visit theargus.co.uk/classifieds

MIND BODY SPIRIT

REVEAL

From Acupuncture to Yoga, Beauty Treatments to Weight Control, let people know what services you have to offer by promoting your business in the **Mind Body Spirit** section.

To find out how, call the team on **01273 021402** or email adverts@theargus.co.uk



Patrick Arundell

YOUR STARS WITH

- ARIES MARCH 21 - APRIL 20**
With so much going on in your sector of goals, you may be more than happy to enjoy some quiet time and to reflect on all that has happened recently. Doing so could make you aware of the inner and spiritual resources that you have at your disposal, and this might come as a surprise. Call for more...
FOR WEEKLY READINGS CALL **09065 856 084** 60p PER MINUTE + ACCESS CHARGE
- TAURUS APRIL 21 - MAY 21**
Your social life may have extra sizzle, with friendly Venus now in this zone encouraging you to enjoy mingling and spending time in good company. A meeting over coming days could inspire you to explore options that you might not have heard of before. Call for more astral advice...
FOR WEEKLY READINGS CALL **09065 856 085** 60p PER MINUTE + ACCESS CHARGE
- GEMINI MAY 22 - JUNE 21**
A sensitive blend of energies can see you exploring possibilities that might enable you to make use of a talent for helping others. There may be many ways you can do this, and these compassionate acts of service can prove satisfying in so many ways Gemini. Call for more...
FOR WEEKLY READINGS CALL **09065 856 086** 60p PER MINUTE + ACCESS CHARGE
- CANCER JUNE 22 - JULY 22**
With your travel and adventure sector now in focus, the coming weeks can bring opportunities to enjoy a romantic break or a vacation you might really enjoy. It is possible though, that someone could invite you to journey with them on the spur of the moment. Call for more advice...
FOR WEEKLY READINGS CALL **09065 856 087** 60p PER MINUTE + ACCESS CHARGE
- LEO JULY 23 - AUGUST 23**
An unexpected opportunity to do business with someone could result in you exploring possibilities that are different from anything you might have tried before. This can leave you excited at what is to come. To make the most of this chance, it will need some dedicated effort. Call for more...
FOR WEEKLY READINGS CALL **09065 856 088** 60p PER MINUTE + ACCESS CHARGE
- VIRGO AUGUST 24 - SEPTEMBER 22**
Venus's link to Uranus can see you making the most of a friendship with someone who proves fascinating to be with. And the Moon's face-off with dwarf planet Chiron can find you emotional about a financial issue that could be easily resolved with some sound advice Virgo. Call for more...
FOR WEEKLY READINGS CALL **09065 856 089** 60p PER MINUTE + ACCESS CHARGE
- LIBRA SEPTEMBER 23 - OCTOBER 23**
You may wonder whether to broach a difficult issue, or not. It could be that you feel embarrassed or might wonder if they will be offended. If you think about it too much, you may not bother at all. If you approach this thoughtfully, conversation can flow and be very healing. Call for more...
FOR WEEKLY READINGS CALL **09065 856 090** 60p PER MINUTE + ACCESS CHARGE
- SCORPIO OCTOBER 24 - NOVEMBER 21**
The coming weeks can see you exploring hobbies that you may have enjoyed in your younger years. Over coming days though, an encounter can sizzle with a certain promise, and might have romantic potential if you take the time to nurture it Scorpio. Call for more news and advice...
FOR WEEKLY READINGS CALL **09065 856 091** 60p PER MINUTE + ACCESS CHARGE
- SAGITTARIUS NOVEMBER 22 - DECEMBER 20**
Your attention may be drawn by a gadget or other item that might be very useful around the home. And if the price is right, then you could be quite delighted. Plus, with a focus on your domestic sector, the coming weeks can bring opportunities to beautify your home. Call for more news...
FOR WEEKLY READINGS CALL **09065 856 092** 60p PER MINUTE + ACCESS CHARGE
- CAPRICORN DECEMBER 21 - JANUARY 20**
Your everyday activities and encounters can be pleasant and agreeable. Your social life could pick up over the weeks ahead, with opportunities to make lively new friends. Over coming days though, a sparkling encounter could allow you to get to know someone better. Call for more...
FOR WEEKLY READINGS CALL **09065 856 093** 60p PER MINUTE + ACCESS CHARGE
- AQUARIUS JANUARY 21 - FEBRUARY 19**
Buying something for the home? With creative Venus linking to innovative Uranus, your preference may be for items that are unique in some way. Ready to entertain? An unexpected guest could show up, and if so, they may be great company Aquarius. Call for more advice...
FOR WEEKLY READINGS CALL **09065 856 094** 60p PER MINUTE + ACCESS CHARGE
- PISCES FEBRUARY 20 - MARCH 20**
With the planet of harmony and beauty now in your sign, the coming weeks could see you keen to negotiate and to give others an equal say in any discussions. Convivial Venus can inspire you to reach out and make new friends, or perhaps to initiate social events. Call for more advice...
FOR WEEKLY READINGS CALL **09065 856 095** 60p PER MINUTE + ACCESS CHARGE

LIVE PSYCHICS CALL NOW

09065 705 944

£1.50/min + access charge

Astrology calls cost 60p per min. Live PRS calls cost £1.50 per min. These calls may be subject to the addition of your telephone company's network access charge. Callers must be 18 or over to use this service and have the bill payer's permission. For entertainment purposes only. All calls are recorded. Phone-Paid Services Authority regulated SP: Stream Live Ltd SE1 1JA, 0800 0673 330.

The Guardian Jobs Public Services and Noticeboard

JOB OPPORTUNITY AT HIGH COMMISSION OF INDIA, LONDON

Applications are invited for the following post in the High Commission of India, London:

I. Chauffeur

- a) Good Command of English Language
- b) Possess at least O/A Level of Qualifications or equivalent
- c) Possess a valid British Driving Licence with driving experience of at least 05 years in UK
- d) Clean driving licence
- e) Familiarity with local addresses and surroundings

Benefits for Chauffeur-

- Competitive Pay in the scale of £1780-53-2575-77-3345-100-4345
- Paid Leave, Overtime Allowance
- Travel and Daily Allowance
- Yearly Bonus as per terms & conditions

2. It is mandatory for the applicants to have long term valid UK Work Permit/ VISA if they are not UK nationals. Resume/CV supported with copies of educational qualifications and visa status may be sent by post/courier/email / by hand latest by 20th January, 2020 to:

The Head of Chancery
High Commission of India
India House, Aldwych,
London WC2B 4NA
Email: adm1.london@mea.gov.in

3. Those resumes which are not supported by required Visa Status/Educational Qualification will be summarily rejected. Selection of candidates will be based on performance in Interview followed by driving test.



Are you interested in working for a leading Charity in its field? Allergy UK is launching its 2020-2025 Strategy for Change with a vision that no one in the UK should die from allergy. We are looking to recruit outstanding candidates to help us deliver our mission for everyone in the UK to take allergy seriously.

Individual Giving

Are you passionate about individual giving? We are looking for an enthusiastic and passionate full time Individual Giving Fundraising Officer, with direct marketing experience, who will develop a robust programme for individual giving and donor retention.

Management Accountant

Are you an experienced and qualified Management Accountant with third sector expertise? We are seeking a part time individual to lead our small Finance Team and bring outstanding financial management skills and experience from the charitable sector to provide timely, accurate and relevant information for the Board and CEO to be able to plan and make effective decisions, contributing to the overall financial appraisal of the organisation's performance.

If you would like further details on these exciting roles, our competitive salaries and staff benefits these roles are advertised on <https://jobs.theguardian.com>

Alternatively, you can contact Recruitment@allergy.uk



Black Cultural Archives Chair

Black Cultural Archives established in 1981 opened its landmark HQ at 1 Windrush Square, Brixton in 2014. Today BCA is a national institution dedicated to collecting, preserving and showcasing the histories of black people in Britain and their place in British history.

BCA is now looking for an exceptional Chair with a strong network who is dynamic, creative and compelling to work with our Managing Director and Board of Trustees to guide the organisation through the next stage of its development, including the implementation of its 2030 vision.

This is an exciting time to join a unique, valued and internationally significant organisation bringing your time and skills to complement a renewed Board of Trustees in readiness for the next critical phase of BCA's evolution.

To apply, please send your CV and covering letter to bcachair@savannah-group.com by closing date Saturday 29th February 2020.

The covering letter should highlight your interest in BCA and motivation for joining our Board. Please also detail your availability and relevant experience.

Download the full recruitment pack at <https://blackculturalarchives.org/vacancies>

Professional CV writing service

To save 10% enter GU10D
cv-writers.org.uk



Thank you for your support

With your help, we can work towards a better, fairer world for everyone.

To find out more, visit gu.com/supporter



Department for Transport

RAILWAYS ACT 2005

PROPOSAL BY OPERATOR TO CLOSE NEWHAVEN MARINE STATION

Network Rail has notified the Department for Transport that it proposes to close Newhaven Marine station.

Under section 29(7)(a) of the Railways Act 2005, the Secretary of State, as the relevant railway funding authority, is required to carry out a consultation concerning any proposal to discontinue the use of a station.

This notice is made in compliance with the statutory requirements in Schedule 7 to the Railways Act 2005 and relates to the closure of the following station:

- Newhaven Marine station, which is located on a short branch immediately south of Newhaven Harbour station.

Following the Railways Closures Guidance 2006, Network Rail, as network operator, has carried out an initial assessment of whether retaining the existing station as part of the national rail network represents value for money. Network Rail concluded that closing Newhaven Marine station and keeping the track as a siding for berthing trains, as now, but also for freight train access to Newhaven Port where a new dock and freight handling facility is due to open, offered better value for money. It is proposed that, subject to successful completion of the closure process, the station will be closed, on or after 26 September 2020.

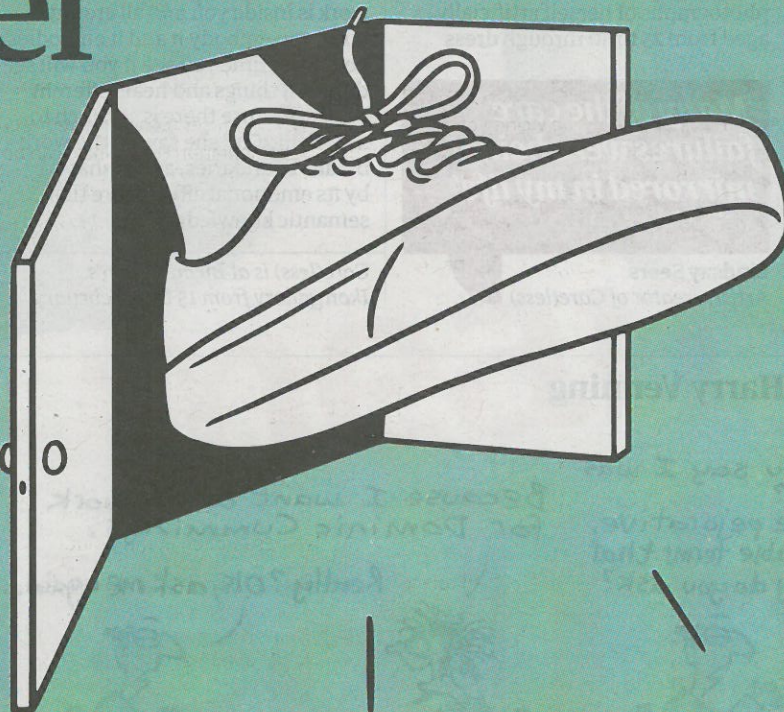
Anyone wishing to see Network Rail's initial assessment, and a summary of it, may view the consultation document on the Department for Transport's website at dft.gov.uk/consultations/open

The consultation document may also be inspected at the Department for Transport's offices at Great Minster House, 33 Horseferry Road, London, SW1P 4DR. Alternatively, copies can be obtained from Andrew Johnson at the same address or by email from NewhavenMarine.Consultation@dft.gov.uk

Copies will be provided free of charge.

Representations about the proposal should be sent to: NewhavenMarine.Consultation@dft.gov.uk or Newhaven Marine Station Consultation, Department for Transport, Great Minster House, 33 Horseferry Road, London, SW1P 4DR no later than 19 April 2020.

Kick off your career



Find your place today.
Visit gu.com/find-good-company

The GuardianJobs
Find good company



Court Circular



Sandringham, Norfolk
14th January, 2020
The Duke of Cambridge, on behalf of The Queen, held an Investiture at Buckingham Palace this morning.

Clarence House
13th January, 2020
The Prince Charles, Duke of Rothesay, this evening received representatives from the World Economic Forum.

14th January, 2020
The Prince Charles, Duke of Rothesay this morning received Dr Michael Cantlay (Chairman, Scottish Natural Heritage) and Ms Francesca Osowska (Chief Executive).

The Duchess of Rothesay, Chancellor, University of Aberdeen, this morning attended a graduation ceremony and conferred honorary degrees, King's College, Aberdeen, and was received by Her Majesty's Lord-Lieutenant of the City of Aberdeen (Councillor Barney Crockett, the Lord Provost).

Her Royal Highness this afternoon opened Banchory Sports Village, Provost Webster Road, Banchory, and was received by Her Majesty's Lord-Lieutenant of Kincardineshire (Mrs Roderick Kinghorn).

Kensington Palace
14th January, 2020
The Duke of Cambridge, Joint Patron,

the Royal Foundation of The Duke and Duchess of Cambridge, this afternoon attended a Meeting for the Earthshot Prize, Salesforce Tower, 110 Bishopsgate, London EC2.

St James's Palace
14th January, 2020
The Earl and Countess of Wessex this afternoon gave a Luncheon for Her Majesty's Lord-Lieutenants from the Wessex region.

St James's Palace
14th January, 2020
The Princess Royal this morning received an Honorary Degree of Doctor of Laws from the University of Aberdeen, King's College, Aberdeen, and was received by Her Majesty's Lord-Lieutenant of the City of Aberdeen (Councillor Barney Crockett, the Lord Provost).

Kensington Palace
14th January, 2020
The Duke of Gloucester, President, British Expertise International, this morning chaired a panel of judges for the British Expertise International Awards at 23 Grafton Street, London W1.

His Royal Highness, Patron, the Guild of the Royal Hospital of St Bartholomew, this afternoon received Mr Patrick Jennings upon relinquishing his appointment as Chairman and Ms Valeria Locatelli and Mr Ian McDowell upon assuming the appointments as Co-Chairman.

The Duchess of Gloucester, Patron, Enham Trust, this morning received Professor Khalid Aziz (Chairman of the Board of Trustees) and Mr Heath Gunn (Chief Executive).

Births, Marriages and Deaths

newsukadvertising.co.uk • 020 7782 7553

PETER came to Jesus and asked, "Lord, how many times shall I forgive my brother or sister who sins against me? Up to seven times?" Jesus answered, "I tell you, not seven times, but seventy-seven times." Matthew 18.21-22 (NIV)

Verses provided by the Bible Society

Births

CRICHTON-STUART On 17th December 2019 to Izzie (née Heygate) and Rollo, a son, Ludo Arthur Edward, brother to Henry.

MERRICKS
On 1st November 2019 to Abigail Lydia (née Bond) and Ian Alexander, a son, Hetfield Lion Bond, brother to Eavis Skywalker Bond. Don't stop believin'!

PAKENHAM On 8th January 2020 to Julie (née Emerson) and Joseph, a daughter, Rose, sister to Dylan.

WITHERS On 9th January 2020 at 01.49am, Josie Collins and Rob Withers welcomed their beautiful baby son, Bobby into the world. A brother to Ella.

Deaths

BONNAR Douglas Kershaw died peacefully on 9th January 2020, aged 88. Beloved husband of the late Suzanne (née Bettinson), father of Mark, Lindsay, Nick and James, grandfather to Edward, Helena, Charlotte, Alistair, Claire, Will, Tom, Rufus and Millie and great grandfather to Eilidh. Private cremation followed by a service of Thanksgiving on Thursday 30th January at 2.15pm at All Saints Church, Shelley, Suffolk, IP7 5QX. No flowers please.

BRACKENBURY Mark Hereward on 14th December 2019, aged 88. A service celebrating his life is to be held at St. Mary's Church, Stebbing, on Friday 24th January 2020 at 1.30pm. No flowers please, but donations to the RNLI welcomed.

COOK Alison Joy (née Perks) died peacefully on 2nd January 2020, aged 76, at Tunbridge Wells Hospital, after a short illness. Darling wife of James, much loved mother of Philippa, Edward, Hilary and Celia and adored grandmother to her eleven grandchildren. The funeral service will be at 2pm, on Thursday 30th January, at St. Mary's Church, Leigh, Kent.

COPELEY-WILLIAMS Erlend, A aged 86. Died quietly at home on 11th January, after a short illness. Requiem at Donhead St Mary's Church, Wilt's, SP3 6AE, at 12.30pm, on Tuesday 28th January. No flowers please, donations to RBL. No black.

DAVIS Martyn Paul aged 90, died peacefully on 25th December 2019, after a long and fulfilling life. The service to celebrate his life will be held on 23rd January 2020, at 3.30pm, at The Crematorium, Lambeth Cemetery, 29 Blackshaw Road, London, SW17 0DH. No flowers please. Donations, made out to Hallmark Care Homes, SW19 (for the benefit of Kew House staff, who looked after him so well) to Customer Relations Manager, Kew House, 58 Spencer Hill Road, London, SW19 4EL. Enquiries to Ashton Funeral Directors, 020 8946 1051, ashton.wimbledon@dignityfunerals.co.uk.

DENNY Richard Coningsby passed away peacefully on 1st January 2020, aged 97. Richard will be sadly missed by family and friends. Funeral will take place at 1.45pm, on 22nd January, at Putney Vale Crematorium. No flowers.

DIGBY-SMITH Leonora, long-standing resident of Primrose Hill, lover of the arts and tireless champion for the animals, aged 94 on Boxing Day at Compton Lodge NW3 with family by her side. Donations if desired to Celia Hammond Animal Trust.

EVANS John Jeffrey passed away peacefully on 11th January 2020, aged 87. Surrounded by his wife Pearl, his children Nigel, Debbie, and Joanne, and mourned by his 7 grandchildren and 2 Great grandchildren. Funeral to be held at Pucklechurch crematorium at 10.15 January 23rd and reception afterwards at Lansdown golf club.

EVANS-TIPPING Christopher died on 11th January, aged 73. Beloved husband of Fenella and much loved father of Amy and Guy. A Thanksgiving Service will be held at 2.30pm on the 23rd January at St Peter's Church, Milton Lilbourne. No flowers please, but donations, if desired, to Pancreatic Cancer Research Fund. Enquiries to Dianne Mackinder Funeral Service 01672 512444.

GIFFARD Charles Gerald Peacefully at home on Thursday 9th January 2020, aged 87. Charles, beloved husband of the late Fiona. Dear father of Catriona and Averil and a much-loved Grandpa of Rose, Abigail and Henry. Private cremation followed by a service at St Brides Episcopal Church, Hyndland Road on Tuesday 21st January, at 12.30pm.

HICHENS Robert Enys died peacefully on 8th January 2020, aged 87 surrounded by his immediate family. Darling husband of Mariquita, adored father of Carezza, Simon and Sarah, and loving grandfather of six. Funeral at 11AM, St Peter's, Flushing, Cornwall, TR11 5TP on 24th January. Donations to T. S. Robert Hichens Falmouth & Penryn Sea Cadets.

HOLDAWAY Graeme John Davis died peacefully on 6th January 2020, aged 63. Surrounded by the love of his family and friends. Much loved and greatly missed husband of Alex, father of Finlay. Beloved brother of Linda and Kay, nephew of Margaret. Treasured uncle of Maxine, Mollie, Grace and Lily. Funeral service to take place at St Cuthbert's Church, Wells, BA5 2AW on Saturday 25th January at 3pm. Family flowers only. Donations if desired to Marie Curie or Help Musicians UK.

JONES. - George Antony (Tony). Died peacefully on 28th December. Beloved husband of the late Harriet, much-loved father of Rosanna and Edward and Grandpa to Sebastian, Arabella, Harry and Dominic. A wise and kind man. A Thanksgiving Service will be held at St. Paul's Church, Ashford Hill, RG19 8AZ, on 27th March, at 11.30am. No flowers please. Donations if desired to St Michael's Hospice, Basingstoke.

MORHAM Muriel (née Dietterle) died peacefully on 4th January 2020, aged 97. Much-loved wife of the late Hugh and will be sadly missed by family and friends. Cremation at Enfield Crematorium on 21st January, at 3pm.

TAYLER Elizabeth Maragret on 8th January 2020, aged 77 years. Liz of Tilston, Cheshire. Service of thanksgiving for her life at St. Mary's Church, Tilston, on Friday 31st January, at 2pm. Family flowers only please. Donations if desired for St. Mary's Church. Enquiries to Rolfe's The Family Funeral Service Whitechurch. Telephone (01948) 662209.

WILSON Isabella Rose died suddenly on 30th December 2019, aged 11 after a brave battle with leukemia. Much-loved daughter and sister. Funeral at St Luke's, SW12 8RQ, on Thursday 16th January, at 11am. Donations to the Izzy Wilson Smile Fund www.iwsf.org.uk.

YORK Edward died peacefully on 14th January 2020, at home. Beloved husband of Sarah, much loved father of Christy and Serena and adored Pops. Private family funeral with a Service of Thanksgiving to follow, date to be announced.

YOUNG, Ann Christine (née Barratt) LRAM SRN BA (Open University) died 27th December 2019, of heart disease aged 86. Funeral arrangements by Aston Brookes, Church St, Altrincham, Cheshire, WA14 4DB, (0161 928 7816). Family flowers only; charity donations if desired to Musicians Benevolent Fund.

Legal Notices

IN THE HIGH COURT OF JUSTICE BUSINESS AND PROPERTY COURTS OF ENGLAND AND WALES COMPANIES COURT (CHD) Claim No. CR-2019-006243

IN THE MATTER OF GALLIFORD TRY PLC - and - IN THE MATTER OF THE COMPANIES ACT 2006

NOTICE IS HEREBY GIVEN that the Order of the High Court of Justice dated 17 December 2019 confirming, inter alia, the reduction of capital of the above-named company and the statement of capital approved by the capital of the Company as altered the several particulars required by the above-mentioned Act were delivered to the Registrar of Companies on 2 January 2020 and registered on 3 January 2020.

Dated the 15th day of January 2020. CMS Cameron McKenna Nabarro Olswang LLP Cannon Place 78 Cannon Street London EC4N 6AF Tel: 020 7367 3000 Fax: 020 7367 2000 Ref: GMG/033343.00164 Solicitors for the above-named Company

CLAIM NUMBER: CR-2019-007820 IN THE HIGH COURT OF JUSTICE BUSINESS AND PROPERTY COURTS OF ENGLAND AND WALES COMPANIES COURT IN THE MATTER OF KARLSON UK LIMITED AND IN THE MATTER OF THE COMPANIES ACT 2006

NOTICE IS HEREBY GIVEN that the order of the High Court of Justice (Business and Property Courts of England and Wales) dated 17 December 2019 confirming the reduction of capital of Karlson UK Limited (the "Company") and a statement of capital were registered by the Registrar of Companies on 27 December 2019. Dated 15 January 2020 BDB Pitmans LLP 50 Broadway London SW1H 0BL Ref: JWS/199174.0001 Solicitors for the above named Company.

FAVERSHAM OYSTER FISHERY COMPANY Registered Office: 16 Mill Street Maidstone Kent ME15 6XT

Faversham Oyster Fishery Company Act 2017 ("The Act") Missing Shareholders: Notice under section 13(1) of the Act (first notice)

The Faversham Oyster Fishery Company ("The Company") hereby gives notice under section 13(1) of the Act of its intention to serve Shareholder Notices in accordance with Part 3 of the Act. The persons on whom the Company intends to send shareholder notices are: Albert Brenchley; Lillian M A Chapman; Charles R Chapman; Georgina Chapman; William T Dane; William G J Dane; Arthur Dane; Geoffrey C Dane; H Dane; Joseph Dane; FH Phillips & Co (Lowestoft) Ltd; David H Gardner; Frank E Gregory; Frank E M Gregory; Frederick Gregory; Marie Gregory; Charles S Gregory; John C Gregory; John E S Gregory; Edward G Gregory; Walter Gregory; Hermione C Hanson; Ernest T N Harris; Lydia J Hedgecock; Spencer Hume; Benjamin R H Jemmett; William Jemmett; Frederick Jemmett; H Kirby; Henry R Lightfoot; Harry R Lightfoot & Others; William Matthews; Albi H McRobert; William H Owen; Hubert H Owen; Mrs M V Owen; Mrs M P Packman; James G Palmer; Elizabeth Parkin & Others; Edward Peggs; Marshall B Pollock; Frederick H Pout; James H Ray; Nellie Ray; Percy F Ray; Bertram F Ray; George S Ray; Valerie A Ross; Lucy L Semark; Frederick W Tony; Vera G Turner; Frederick C Usher; Dorothy E Usher; Margaret A C Winder. Part 3 of the Act deals with missing shareholders and contains a procedure whereby the Company can ultimately sell the shares of missing shareholders. Following publication of this first notice, the Company may send three successive notices (known as Shareholder Notices) in respect of the persons mentioned above. The Shareholder Notices will be sent by post to the last address shown on the Company's register of shareholders. They will contain a notice (a Claimant's Notice) which can be completed and returned, to claim an interest in the shares in question. If the third Shareholder Notice has been sent, a further notice similar to this one must be published by the Company. The period of time during which a claim can be made begins with the date of the first publication of this notice and expires at the end of the period of 18 months beginning with the date of the first publication of the further notice which follows the service of the third successive Shareholders Notice (known as the notification period). If the Claimant's Notice is completed and returned and the Company is satisfied that the claimant has an interest in the share(s) in question, then the Company will enter the name of the claimant in the register of shareholders and pay the claimant arrears of dividends in respect of a period of 12 years. If despite following the procedure outlined above the Company concludes that the shareholder in question is a missing shareholder (for example because it receives no response to the three Shareholder Notices) then it may sell the shares in question to any person (including the Company itself). The Company must hold the proceeds of the sale in a separate account, and those proceeds may be employed in the business of the Company or invested. Part 3 of the Act is without prejudice to section 125 of the Companies Act 2006 Act (power of court to rectify register). Dated the 15th day of January 2020 D.W. Cramp, Secretary Registered in England and Wales Company No. 10898842 Faversham Oyster Fishery Company is a limited company

Readers' Lives
With big smiles, Noah enjoys splashing his parents at bathtime. Next year he'll be chattering in Arabic
NOAH ALSAYEDAHMAD WAS BORN ON FEBRUARY 4, 2019 AT THE QUEEN ELIZABETH HOSPITAL, WOOLWICH, TO EMMA, 29, AND MOHAMAD ALSAYEDAHMAD, 37
Celebrate the life of a friend or relative in Readers' Lives, a service in contracted tributes
50% discount for subscribers
Call 020 7782 5583 or email readerslives@thetimes.co.uk
THE TIMES

THE TIMES
The simple way to place your announcement in The Times. Available 24 hours a day, seven days a week.
newsukadvertising.co.uk

Department for Transport
RAILWAYS ACT 2005
PROPOSAL BY OPERATOR TO CLOSE NEWHAVEN MARINE STATION
Network Rail has notified the Department for Transport that it proposes to close Newhaven Marine station.
Under section 29(7)(a) of the Railways Act 2005, the Secretary of State, as the relevant railway funding authority, is required to carry out a consultation concerning any proposal to discontinue the use of a station.
This notice is made in compliance with the statutory requirements in Schedule 7 to the Railways Act 2005 and relates to the closure of the following station:
• Newhaven Marine station, which is located on a short branch immediately south of Newhaven Harbour station.
Following the Railways Closures Guidance 2006, Network Rail, as network operator, has carried out an initial assessment of whether retaining the existing station as part of the national rail network represents value for money. Network Rail concluded that closing Newhaven Marine station and keeping the track as a siding for berthing trains, as now, but also for freight train access to Newhaven Port where a new dock and freight handling facility is due to open, offered better value for money. It is proposed that, subject to successful completion of the closure process, the station will be closed, on or after 26 September 2020.
Anyone wishing to see Network Rail's initial assessment, and a summary of it, may view the consultation document on the Department for Transport's website at dft.gov.uk/consultations/open
The consultation document may also be inspected at the Department for Transport's offices at Great Minster House, 33 Horseferry Road, London, SW1P 4DR. Alternatively, copies can be obtained from Andrew Johnson at the same address or by email from NewhavenMarine.Consultation@dft.gov.uk
Copies will be provided free of charge.
Representations about the proposal should be sent to: NewhavenMarine.Consultation@dft.gov.uk or Newhaven Marine Station Consultation, Department for Transport, Great Minster House, 33 Horseferry Road, London, SW1P 4DR no later than 19 April 2020.



Classified

To advertise call **01273 021400** Or email : adverts@theargus.co.uk

To place your advertisements online: theargus.co.uk/classifieds

Property Wanted

I BUY HOUSES

ANYTHING CONSIDERED
NO OBLIGATION & NO FEES
WORK TO YOUR TIMESCALE
ADVANCE CASH AVAILABLE
I BUY PERSONALLY & HAVE BEEN
HELPING PEOPLE MOVE ON SINCE 2005.
CALL ROBERT NOW 07967 460001

Public Notices

Department for Transport
RAILWAYS ACT 2005
PROPOSAL BY OPERATOR TO CLOSE NEWHAVEN MARINE STATION

Network Rail has notified the Department for Transport that it proposes to close Newhaven Marine station.

Under section 29(7)(a) of the Railways Act 2005, the Secretary of State, as the relevant railway funding authority, is required to carry out a consultation concerning any proposal to discontinue the use of a station.

This notice is made in compliance with the statutory requirements in Schedule 7 to the Railways Act 2005 and relates to the closure of the following station:

- Newhaven Marine station, which is located on a short branch immediately south of Newhaven Harbour station.

Following the Railways Closures Guidance 2006, Network Rail, as network operator, has carried out an initial assessment of whether retaining the existing station as part of the national rail network represents value for money. Network Rail concluded that closing Newhaven Marine station and keeping the track as a siding for berthing trains, as now, but also for freight train access to Newhaven Port where a new dock and freight handling facility is due to open, offered better value for money. It is proposed that, subject to successful completion of the closure process, the station will be closed, on or after 26 September 2020.

Anyone wishing to see Network Rail's initial assessment, and a summary of it, may view the consultation document on the Department for Transport's website at dft.gov.uk/consultations/open

The consultation document may also be inspected at the Department for Transport's offices at Great Minster House, 33 Horseferry Road, London, SW1P 4DR. Alternatively, copies can be obtained from Andrew Johnson at the same address or by email from NewhavenMarine.Consultation@dft.gov.uk

Copies will be provided free of charge.

Representations about the proposal should be sent to: NewhavenMarine.Consultation@dft.gov.uk or Newhaven Marine Station Consultation, Department for Transport, Great Minster House, 33 Horseferry Road, London, SW1P 4DR no later than 19 April 2020.

Goodbye 

Good buy 

Turn your unwanted goods in to cash

Advertise on the MART today
Items valued under £99 can be sold for FREE and will appear in The Argus and online

Visit theargus.co.uk/mart

Pets for sale?

To advertise in the pets section, call the team on 01273 021404 or email adverts@theargus.co.uk



The Argus Leader



Patrick Arundell YOUR STARS WITH

- ARIES MARCH 21 - APRIL 20**
A small but unexpected windfall or a positive event that occurs out of the blue, could leave you feeling you're not alone and that the cosmos has your best interests at heart. Equally possible, is an encounter with someone who may have advice that is exactly what you needed to hear. Call for more...
FOR WEEKLY READINGS CALL **09065 856 084** 60p PER MINUTE + ACCESS CHARGE
- TAURUS APRIL 21 - MAY 21**
You may have made a promise to someone, but a willful blend of energies could mean that you don't feel like committing to it. Would the person in question really be bothered? They could be Taurus, which might not help your relationship. Call for more news and astral advice...
FOR WEEKLY READINGS CALL **09065 856 085** 60p PER MINUTE + ACCESS CHARGE
- GEMINI MAY 22 - JUNE 21**
Honesty can be your best policy over coming days, especially should you feel an urge to ditch your schedule in pursuit of something more daring. While it may be tempting to disguise the reality, you will be able to enjoy yourself so much more if you tell it how it is. Call for more...
FOR WEEKLY READINGS CALL **09065 856 086** 60p PER MINUTE + ACCESS CHARGE
- CANCER JUNE 22 - JULY 22**
Much as you might like to micro-manage your day and have things go exactly to plan, there is a chance that they may not. If you can go with the flow things may be more relaxed, and you might even find that you learn something from any distractions that occur. Call for more advice...
FOR WEEKLY READINGS CALL **09065 856 087** 60p PER MINUTE + ACCESS CHARGE
- LEO JULY 23 - AUGUST 23**
What you want and what others want, may be two very different things. If you don't like what they are asking you to do, you might decide to stand your ground. The willingness to meet them halfway will not go unnoticed and you might find that any compromise is not so bad after all. Call for more...
FOR WEEKLY READINGS CALL **09065 856 088** 60p PER MINUTE + ACCESS CHARGE
- VIRGO AUGUST 24 - SEPTEMBER 22**
You may seek peace of mind, but if there is something you are fretting over, then it might not be so easy to come by. With the Sun angling towards the potentially disruptive Uranus, you may find that getting to grips with it first is the best way to relax Virgo. Call for more news and astral advice...
FOR WEEKLY READINGS CALL **09065 856 089** 60p PER MINUTE + ACCESS CHARGE
- LIBRA SEPTEMBER 23 - OCTOBER 23**
Do you really want to get involved in activities that could stir you up? Or would you prefer to do your own thing? An edgy angle between the Sun and restless Uranus, suggests that focusing on your hobbies and interests might bring greater satisfaction. Call for more news and advice...
FOR WEEKLY READINGS CALL **09065 856 090** 60p PER MINUTE + ACCESS CHARGE
- SCORPIO OCTOBER 24 - NOVEMBER 21**
With electric Uranus figuring strongly in the equation, a friend may have to back out of a planned get-together, leaving you high and dry. Whatever the scenario, have contingency plans and include a chance for some self-care. Perhaps someone else could take their place. Call for more...
FOR WEEKLY READINGS CALL **09065 856 091** 60p PER MINUTE + ACCESS CHARGE
- SAGITTARIUS NOVEMBER 22 - DECEMBER 20**
Your best laid plans could come to nothing, and yet this might not be such a bad thing Archer, as new opportunities can show up in their place. If you can keep an open mind and adopt a flexible approach, something exciting may come to light. Call for more news and astral advice...
FOR WEEKLY READINGS CALL **09065 856 092** 60p PER MINUTE + ACCESS CHARGE
- CAPRICORN DECEMBER 21 - JANUARY 20**
A delightful alignment between Venus and Jupiter can coincide with an encounter that oozes with promise. You may find this person to be warm, sincere and pleasant to be around, and this can encourage you to want to befriend them, collaborate with them or do business with them. Call for more...
FOR WEEKLY READINGS CALL **09065 856 093** 60p PER MINUTE + ACCESS CHARGE
- AQUARIUS JANUARY 21 - FEBRUARY 19**
There is still a powerful focus on a private sector that may be causing you to powerfully doubt yourself at times. Even so, this is very much an opportunity to affirm your self-worth and believe that a solution is possible. A positive Venus/Jupiter aspect can boost confidence. Call for more...
FOR WEEKLY READINGS CALL **09065 856 094** 60p PER MINUTE + ACCESS CHARGE
- PISCES FEBRUARY 20 - MARCH 20**
Whatever you had planned may not happen as intended, as an edgy Uranus tie hints at disruptions. Something may need attending to, and it could mean liaising with another to resolve it. Don't bank on their co-operation though, as they may be caught up in resolving their own issues. Call for more...
FOR WEEKLY READINGS CALL **09065 856 095** 60p PER MINUTE + ACCESS CHARGE

LIVE PSYCHICS CALL NOW

09065 705 944

£1.50/min + access charge

Astrology calls cost 60p per min. Live PRS calls cost £1.50 per min. These calls may be subject to the addition of your telephone company's network access charge. Callers must be 18 or over to use this service and have the bill payer's permission. For entertainment purposes only. All calls are recorded. Phone-Paid Services Authority regulated SP: Stream Live Ltd SE1 1JA, 0800 0673 330.

The Guardian Jobs Public Services & Noticeboard

Join us in empowering a new generation of girls and young women



With nearly half a million members we are the largest charity dedicated to girls and young women in the UK, and one of the largest and leading youth charities. With our 2020+ strategy launching soon, this really is an exciting time to join Girlguiding.

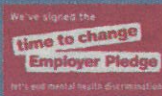
We are looking for skilled, passionate and resilient leaders who share our values and vision to enable even more girls and young women to fulfil their potential and make a difference.

- Director, Finance and Commercial
- Director, Resources - People and Technology
- Director, Strategy and Transformation

While Girlguiding's young membership is only open to girls and young women, we work as one team with over 100,000 adult volunteers. We value the differences that a diverse workforce brings and are committed to inclusivity across the organisation.

Discover more at www.gatenbysanderson.com

Closing date for applications is 10am Monday 17 February



Service Director Adult Social Care

Salary up to £94,000 per annum
Permanent

West Street House, Newbury, Berkshire RG14 1BZ
Full time: 37 hours per week



We are seeking an inspirational and imaginative strategic leader to take on the newly created role of Service Director, Adult Social Care within our People Directorate. This role will have a clear brief to continue our journey of improving and modernising service delivery whilst ensuring an appropriate focus upon resource allocation and financial management.

The right candidate will have exceptional communication and leadership skills, a proven record of forming and maintaining effective partnership relationships as well as leading organisational change. At a challenging time for the public sector we want to recruit a Service Director with the ambition, experience and drive to deliver our vision for the future. As well as leading our Adult Social Care services you will play a key role as part of the People Directorate Leadership Team and the corporate agenda of the Council reporting directly to the Executive Director, People.

This is a great time to join West Berkshire Council, with our already well performing Adult's Services in the midst of an exciting modernisation programme. In this varied and fast paced role, you will provide expert advice to other senior leaders and Elected Members within the organisation, whilst working collaboratively with a wide range of stakeholders such as strategic partners and providers to deliver positive outcomes for residents. As an experienced, credible leader you will focus on the drive to improve the quality of practice, implement our modernisation programme and continue our work on integration with health partners as part of our well-developed Integrated Care Partnership (ICP) arrangements.

West Berkshire Council offer excellent employment benefits such as flexible working, access to a wide range of relevant training, local government pension scheme, family friendly policies, a range of local discounts and much more. You will also be entitled to a generous annual leave entitlement of 29 days per annum rising to a maximum of 34 days. The Council's relocation expenses scheme will apply to this post, paying a maximum of £8,000 where appropriate. You will be required to have a car available at work to undertake your duties as you will be expected to undertake at least 1500 business miles per year. This attracts a monthly lump sum allowance as well as free car parking.

For an informal discussion, please contact Andy Sharp, Executive Director (People) on 01635 519722 or 07833095956.

Closing date: 16th February 2020. Interviews are expected to take place on 9th & 10th March 2020.

For more information to apply online, please visit <http://jobs.westberks.gov.uk>



Be part of the conversation: the ethics of data analytics

Essex Police, Essex County Council and the University of Essex have established the Essex Centre for Data Analytics (ecda) to safely share data and generate new insight that will inform how we meet some of the county's most challenging issues.

Enabling engagement and robust ethical review of ecda's work is important to us, and a new Data Ethics Committee (DEC) is being established to provide independent advice to ecda.

ecda is looking for specialist and lay volunteers to serve on the DEC. ecda would like to hear from data science specialists, ethicists, academics with interest in the ethical use of technology, human rights advocates, and those with expertise in public sector and/or police ethics, social policy, IT, change management, research methods, health policy, regulatory frameworks, sociology, criminology, general or digital ethics and moral philosophy.

For more information and to apply please contact Jennifer.Housego@essex.police.uk by 14 February 2020.



Powered by positivity?

Find your next charity role now
Visit.gu.com/find-good-company



Department for Transport

RAILWAYS ACT 2005

PROPOSAL BY OPERATOR TO CLOSE NEWHAVEN MARINE STATION

Network Rail has notified the Department for Transport that it proposes to close Newhaven Marine station.

Under section 29(7)(a) of the Railways Act 2005, the Secretary of State, as the relevant railway funding authority, is required to carry out a consultation concerning any proposal to discontinue the use of a station.

This notice is made in compliance with the statutory requirements in Schedule 7 to the Railways Act 2005 and relates to the closure of the following station:

- Newhaven Marine station, which is located on a short branch immediately south of Newhaven Harbour station.

Following the Railways Closures Guidance 2006, Network Rail, as network operator, has carried out an initial assessment of whether retaining the existing station as part of the national rail network represents value for money. Network Rail concluded that closing Newhaven Marine station and keeping the track as a siding for berthing trains, as now, but also for freight train access to Newhaven Port where a new dock and freight handling facility is due to open, offered better value for money. It is proposed that, subject to successful completion of the closure process, the station will be closed, on or after 26 September 2020.

Anyone wishing to see Network Rail's initial assessment, and a summary of it, may view the consultation document on the Department for Transport's website at dft.gov.uk/consultations/open

The consultation document may also be inspected at the Department for Transport's offices at Great Minster House, 33 Horseferry Road, London, SW1P 4DR. Alternatively, copies can be obtained from Andrew Johnson at the same address or by email from NewhavenMarine.Consultation@dft.gov.uk

Copies will be provided free of charge.

Representations about the proposal should be sent to: NewhavenMarine.Consultation@dft.gov.uk or Newhaven Marine Station Consultation, Department for Transport, Great Minster House, 33 Horseferry Road, London, SW1P 4DR no later than 19 April 2020.

Careers at The Guardian



To find out more, visit gu.com/workforus

Court Circular



Clarence House

21st January, 2020
The Prince Charles, Duke of Rothesay today undertook engagements at Dumfries House, Dumfries, Ayrshire.
His Royal Highness, President, The Prince's Foundation, this morning held a Meeting.
The Prince Charles, Duke of Rothesay, Patron, Scottish Tartans Authority, afterwards held a Meeting.
His Royal Highness, Colonel-in-Chief, Royal Dragoon Guards, this afternoon received Colonel Nicholas Millen upon relinquishing his appointment as Regimental Colonel and Major General Timothy Hyams upon assuming the appointment.
The Prince Charles, Duke of Rothesay later received the Ambassador from the Republic of Indonesia to the Court of St James's (His Excellency Dr Rizal Sukma).
His Royal Highness, President, The Prince's Foundation, this evening held a Dinner.
The Duchess of Cornwall, Patron, Royal Trinity Hospice,

this evening held a Reception at Clarence House.

Kensington Palace

21st January, 2020
The Duke of Cambridge, President, United for Wildlife, this morning attended a Taskforce Meeting in the State Apartments, St James's Palace.
The President of the Republic of Kenya called upon His Royal Highness in the State Apartments, St James's Palace.
The President of the Arab Republic of Egypt called upon The Duke of Cambridge at Buckingham Palace.

The President of the Republic of Uganda called upon His Royal Highness at Buckingham Palace.

The Duchess of Cambridge, Joint Patron, the Royal Foundation of The Duke and Duchess of Cambridge, this afternoon visited Think Tank, Birmingham Science Museum, Millennium Point, Curzon Street, Birmingham, and was received by Her Majesty's Lord-Lieutenant of West Midlands (Mr John Crabtree).

His Royal Highness, Trustee, The Duke of Edinburgh's Award, this afternoon held a Meeting.
The Countess of Wessex this morning departed from Heathrow Airport, London, for Sierra Leone and was received this evening at Freetown International Airport, Lungi, by the British High Commissioner to the Republic of Sierra Leone (His Excellency Mr Simon Mustard).
Mr Alexander Stonor and Mrs Laura King are in attendance.

St James's Palace

21st January, 2020
The Earl of Wessex, Chairman of the Board of Trustees, The Duke of Edinburgh's International Award Foundation, this morning attended a Meeting at Marlborough House, London SW1.

His Royal Highness, Trustee, The Duke of Edinburgh's Award, this afternoon held a Meeting.

The Countess of Wessex this morning departed from Heathrow Airport, London, for Sierra Leone and was received this evening at Freetown International Airport, Lungi, by the British High Commissioner to the Republic of Sierra Leone (His Excellency Mr Simon Mustard).
Mr Alexander Stonor and Mrs Laura King are in attendance.

St James's Palace

21st January, 2020
The Princess Royal this morning attended the British Equestrian Trade Association Trade Fair, National Exhibition Centre, Birmingham, and was received by Mr Stephen Goldstein (Deputy Lieutenant of West Midlands).
Her Royal Highness, Past Master, the Worshipful Company of Farmers, this evening attended the Annual 'Court and Livery Dinner, Clothworkers' Hall, Dunster Court, London EC3.

Kensington Palace

21st January, 2020
The Duke of Gloucester, Patron, Nuffield Farming Scholarships Trust, this afternoon attended a Luncheon at Savills, 33 Margaret Street, London W1.

Births, Marriages and Deaths

newsukadvertising.co.uk • 020 7782 7553

REMEMBER the former things of old: for I am God, and there is none else; I am God, and there is none like me. Isaiah 46.9 (AV)

Bible verses provided by the Bible Society

Births

MABEY On 20th January 2020 to Lottie Mabe (née Vos) and Richard Mabe, a daughter, Nola Artemis Lux, sister to Otto

VINE On 13th December 2019 to Tamsin Vine (née O'Bryen) and Jonathan Vine, a daughter, Lily India Vine, sister to Charlie

Forthcoming Marriages

MR J.A. BLACKBURN AND MISS R.P. DOUGHTY
The engagement is announced between Jack, son of Mr and Mrs John Blackburn of Henley Common, West Sussex and Ruth, daughter of Mr and Mrs Roy Doughty of Shifnal, Shropshire.

MR J.A. O'DONNELL AND MISS S.T. TERRITT
The engagement is announced between Mr James O'Donnell of Southwark, and Miss Samantha Territt of Southwark.

MR M.J. JENNER AND MISS A.B.M. SCROPE
The engagement is announced between Mark, son of Mr and Mrs Christopher Jenner of Lancashire and Als, daughter of Mr and Mrs Peter Scrope of North Yorkshire.

MR R.R.W. SYME AND MISS A.L. SEEL
The engagement is announced between Rupert, son of Mr and Mrs Richard Syme of Providenciales, Turks and Caicos Islands and London, and Annabel, elder daughter of Mr and Mrs Jeremy Seel of Fawley, Hampshire.

Deaths

ALLEN
Michael John on January 8th 2020 aged 82 years peacefully at home. Beloved husband of Lesley, deeply loved father of Mark, Jonathan, Caroline and grandfather of Matthew, Timothé, Sasha-Rose, George and Henry. The funeral service will take place on Friday January 31st 2020 at All Saints Church, Mendham, Harleston, Norfolk IP20 0NH at 11.30am. Family flowers only please, but donations for Norfolk Heart Trust and RNLI Southwold may be sent c/o Rosedale Funeral Home, 12a Upper Olland Street, Bungay NR35 1BG or via the Much Loved online memorial site at www.rosedalefuneralhome.co.uk

BALFOUR Michael Selby Chartered Accountant and Chevalier de l'Ordre du Mérite (France). Peacefully at home with family on 13th January 2020 after a long illness, bravely borne. Beloved husband of Annette, father to Peter, James and Amanda and grandfather to 8 grandchildren. Funeral on 13th February. Please email amandas3250@gmail.com for further details

BEVERIDGE Alec died peacefully on 19th January 2020, at Earlsferry House Care Home, Elle after a long illness borne with great fortitude. Formerly of Greenbank, Elle. Loving husband of the late and much missed Sandra and father of Bruce and Emma. Funeral service at Kirkcaldy Crematorium on Wednesday 29th January at 10.15am to which all family and friends are invited. No flowers please but donations, if desired on leaving the service, to Parkinson's UK.

BROWN Robert William, BSc CEng FICE, died in Cheltenham on 6 January 2020, aged 93. Widower of Micky (d.1997) and of Betty (d.2009); former partner of Sandy. Deeply loved father of Penny and Katy; grandfather of Tessa, Richard, and Adam. Taunton School (1939-44); Corps of Indian Engineers, Royal Engineers, and Territorial Army (1944-60); Bristol University (1948-51); Consulting Civil Engineer. Enquiries to rwb06012020@gmail.com.

EASTON James OBE died on 11th January 2020, aged 88. Much loved husband of the late Rosemary, father of Helen, James and Mary-Claire, grandfather of Zoe, Hannah, Megan and Niamh, father-in-law of Beth and Angus. Funeral at 9.30am February 4th at Holy Family Church, Sutton, then burial at Sutton Cemetery.

GLENNY Audrey died peacefully on 15th January 2020, aged 92. Formerly from the Isle of Wight and in recent years Oxford. Beloved wife of Tom, now deceased, she will be sadly missed by her children Georgina, Guy, Tobie and Bella. A memorial service will be held on Friday 31st January at 2pm at Church of the Holy Cross, Binstead, Isle of Wight. All welcome. No flowers, donations if desired to Marie Curie.

HALL Ronald died peacefully at home on 15th January 2020, aged 99. Widower of Jean Patricia and much loved brother, father and grandfather to ten grandchildren. Funeral service to take place at the S.W. Middlesex Crematorium at 11 am on Friday 7th February. Family flowers only, donations if desired to the Princess Alice Hospice. Enquiries to Lodge & Keates Funeral Directors, 020 8941 4022.

JAMES Lilian Joan died on 11th January 2020, aged 104. Beloved wife of the late Dr Arthur James and dearly loved by her children, Helen and the late John and David, and by all her grandchildren and great-grandchildren. Private family funeral.

PARDOE Camilla (née Tudor-Evans) died peacefully on 19th January 2020 aged 81. Very much loved wife of Julian, mother of Simon, Joanna and Fiona and grandmother to Bella, Max, Ned, Christian, Rose, Annie, Poppy and Lilla. A family cremation will be followed by a Thanksgiving Service on Tuesday 4th February at 2.30pm at St Peter's Church, Moulton, Newmarket, CB8 8SF.

REUSS Gilbert Alexander Kennedy died peacefully on 13th January 2020, aged 99 and a half. Adored husband of the late Dora, father of Caroline, Louise and Julia, grandfather of Jamie, Sophie, Alexander, Melissa, Belinda, Luke, Benjamin and Oliver, and great-grandfather of Freddie and Charlie. Family Funeral at Mortlake Crematorium on 24th February 2020 at 2 p.m. Donations in lieu of flowers, if desired, to Gurkha Welfare Trust, info@gwt.org.uk

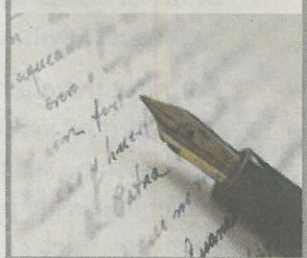
RILEY Jill Veronica (née Hovenden) died peacefully on 16th December 2019. Enquiries to Cranleigh Funeral Service, Tel. 01483 275758

SMALL Capt. Adrian. Master Mariner. Of Brixham and latterly Dolton, crossed the bar on Friday 10th January 2020. Beloved father, grandfather, brother and uncle will be so deeply missed. Private cremation followed by a Thanksgiving Service at St Edmund's Parish Church, Dolton, Devon, EX19 8QE on Friday 31st January at 12.30pm. Family flowers only. Donations for Macmillan Cancer Support at the service, or c/o R Gist & Son, 18 Castle Street, Torrington. EX38 8EZ.

SMITH LADY JOAN Lady Joan Smith, beloved wife of the late Prof. Sir Roland Smith, a trusted and loyal friend to David and Heini for many years. On Thursday 16th January 2020, died peacefully at her home. A celebration for the life of Lady Smith will be held at Douglas Borough Crematorium on Friday 24th January 2020, at 12.15pm. Family flowers only please. Donations in lieu of flowers, if so desired, may be sent to Hospice, Strang, Braddan, Isle of Man, IM4 4RP. All enquiries please to Eric Faragher Ltd, Funeral Directors, 6 Main Road, Onchan, Tel 01624 673109 or 01624 622897 Email enquiries@efi.im.

WATERFIELD Beryl May (née Smith) on 11th January 2020, aged 91 died peacefully after a long illness. Devoted wife of Tony, beloved mother of Tim and Helen. A service of thanksgiving will be held Wednesday 29th January at 12:30 pm at St John the Baptist Church, Pinner. Family flowers only. Donations to Alzheimer's Society. All inquiries to Elements & Sons undertaker 020 8866 0324.

THE TIMES
The simple way to place your announcement in The Times.
Available 24 hours a day, seven days a week.
newsukadvertising.co.uk
and business hours
9.00am to 5.30pm
Monday to Friday
020 7782 7553



Readers' Lives

50% discount for subscribers

Colonial officer's wife who braved big cats in the bush

MARGARET REARDON RELISHED CAMPING IN AFRICA. SHE DIED AGED 98 AND WAS FEATURED IN THE TIMES ON AUGUST 18, 2018

Celebrate the life of a friend or relative in Readers' Lives, a service in contracted tributes

Call 020 7782 5583 or email readerslives@thetimes.co.uk

THE TIMES

Legal Notices

Department for Transport

RAILWAYS ACT 2005

PROPOSAL BY OPERATOR TO CLOSE NEWHAVEN MARINE STATION

Network Rail has notified the Department for Transport that it proposes to close Newhaven Marine station.

Under section 29(7)(a) of the Railways Act 2005, the Secretary of State, as the relevant railway funding authority, is required to carry out a consultation concerning any proposal to discontinue the use of a station.

This notice is made in compliance with the statutory requirements in Schedule 7 to the Railways Act 2005 and relates to the closure of the following station:

- Newhaven Marine station, which is located on a short branch immediately south of Newhaven Harbour station.

Following the Railways Closures Guidance 2006, Network Rail, as network operator, has carried out an initial assessment of whether retaining the existing station as part of the national rail network represents value for money. Network Rail concluded that closing Newhaven Marine station and keeping the track as a siding for berthing trains, as now, but also for freight train access to Newhaven Port where a new dock and freight handling facility is due to open, offered better value for money. It is proposed that, subject to successful completion of the closure process, the station will be closed, on or after 26 September 2020.

Anyone wishing to see Network Rail's initial assessment, and a summary of it, may view the consultation document on the Department for Transport's website at dft.gov.uk/consultations/open

The consultation document may also be inspected at the Department for Transport's offices at Great Minster House, 33 Horseferry Road, London, SW1P 4DR. Alternatively, copies can be obtained from Andrew Johnson at the same address or by email from NewhavenMarine.Consultation@dft.gov.uk

Copies will be provided free of charge.

Representations about the proposal should be sent to: NewhavenMarine.Consultation@dft.gov.uk or Newhaven Marine Station Consultation, Department for Transport, Great Minster House, 33 Horseferry Road, London, SW1P 4DR no later than 19 April 2020.

Responses received

27 responses to the consultation were received by the department during the consultation period from private individuals and stakeholder organisations, including Transport Focus, East Sussex County Council, and RailFuture. Responses that proposed changes to the surrounding rail infrastructure and nearby stations are beyond the scope of this consultation and so are not considered in this summary. However, where possible, we have referred these concerns to Network Rail.

Twenty-three responses made substantive comments about the proposal to close Newhaven Marine station.

Fifteen respondents expressed support for the proposed station closure. Whilst supporting commentary was diverse, 4 responses had a common theme in their support for the freight plans outlined in Network Rail's proposal. Two of these respondents highlighted that their support was conditional on the realisation of the Newhaven Port development project and the benefits this would bring to freight. Two respondents queried why this consultation had not taken place earlier given the length of time services have been suspended at the station, whilst at least one other voiced support for the proposals based on Network Rail's value for money assessment.

Of the 4 respondents who opposed the proposals, 2 did so on the basis that Newhaven Marine's closure may have a negative impact on the quality of local rail services that are available in the future. Similarly, the remaining 2 respondents that opposed the proposals raised concerns about closing any station given that stations and the railways they serve represent a method of responsible and sustainable transportation. Both sets of concerns are underpinned by an assumption that a restored Newhaven Marine would offer some environmental, social or economic benefit to the local area, either immediately or in the future.

The remaining responses did not comment on the merits of the proposed closure of Newhaven Marine station, where other suggestions were received these have been considered.

One respondent raised concerns about traffic disruption and objected to the stations closure on general heritage grounds.

One respondent proposed retaining a parliamentary service so as not to incur closure costs.

One respondent called for a commitment from the rail industry to invest in improvements for the remaining 2 Newhaven stations.

We acknowledge the various suggestions that the land be used for residential homes, those concerning the new port development and associated road infrastructure, and that the platform be sold off to raise funds for Network Rail but these are outside the scope of this consultation.

Responses that proposed further station closures would require a separate process in line with the Railways Act 2005.

One respondent raised a concern about the time a digital display at London Victoria advertised the Department's consultation. The department has confirmed that, in line with the statutory obligations set out in the 'Railways closures guidance', the notices advertising the Newhaven Marine station closure consultation were displayed at London Victoria on both a static poster and additionally a digital display board, for 30 seconds at a time.

Responses on Newhaven Marine's potential benefit to the local area

Departments for Transport comment

Restoring passenger services to Newhaven Marine station would offer no journey time advantages nor would it offer access to any locations not already served by Newhaven Harbour station. These stations' close proximity also mean any environmental impact is negligible. As such, the unused station has no current or future value. The

department therefore supports Network Rail's view that its closure would allow for existing resources to be better focused on improving rail passenger services in the area, and the regeneration of Newhaven Port and supporting freight infrastructure

Response citing traffic disruption and heritage concerns

Department for Transport comment

Where closure works create additional vehicle movements these must be managed in line with current regulations such as those set out by the Health and Safety Executive. Any particular concern on this should in the first instance be directed to Network Rail.

Turning to respondent's heritage concerns, the department is happy to acknowledge the history of Newhaven Marine and its long association with the railway. However, while the Railways Closures Guidance notes that there will often be impacts that cannot be quantified or valued in money terms, historical importance is not one of the objectives for transport referred to as a basis for evaluating railway closures (the objectives being Environmental, Safety, Economy, Accessibility, and Integration).

Response concerning station closure costs

Department for Transport comment

The estimated capital costs in bringing the station up to minimum safety standards required to enable its use by passenger services would exceed the costs of closure.

Response on greater resources for existing Newhaven stations and passenger services

This question was referred to Network Rail who provided the comment:

Network Rail has recently resignalled the Lewes to Seaford line for the benefit of passengers and freight customers and provided access to the new freight terminal. Network Rail would be happy to work with stakeholders on the identification of third-party funded improvements at Newhaven Town and Newhaven Harbour stations as it is not funded for enhancements.

Conclusion

Having considered the responses received to the consultation, the department has concluded that the closure of Newhaven Marine station should proceed, and the closure proposal should be submitted to the ORR for ratification.